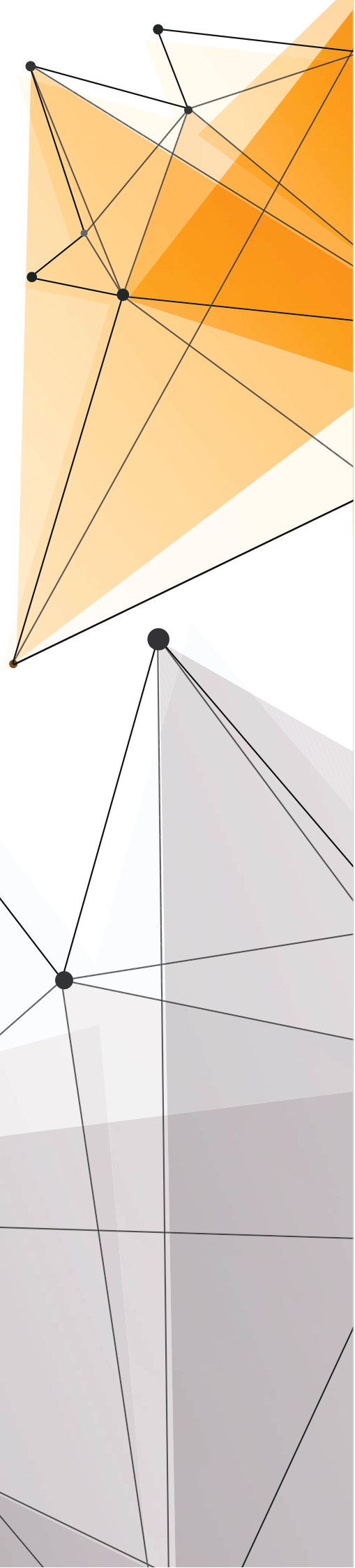


# INTERIOR, ILLUSTRATED, INCREDIBLY.

---

We are an Interior Designer, Who believe in excellence,  
quality and honesty, yes we design beautiful spaces.



# Hello! We're Making Something Different

[Learn about our company](#)

We believe in sculpting your spaces to your dream and beyond and trust us, it is not complex.

We know how to cushion those corners and trick out those tapestries with the most tremendous tapestries.

We strongly believe that uncompromising quality and timely project completion to be the pillars of a successful business.

Our ability to deliver results is from the learning, skills and experience acquired over years of growth coupled with detailed planning and execution systems.

We are dedicated to give our best to satisfy every customer by having a solid network with suppliers and field workers.

We are a bunch of young enthusiasts whose aim is to develop design and implement the most innovative yet cost effective solution for each project and to offer end to end services to our customers.

## Mission

To give a new transformatory touch to every residential, corporate, commercial, or industrial fabrication.

## Vision

To rank in the list of top Interior designers by receiving utmost customer satisfaction



CREATING  
LASTING  
IMPRESSIONS  
THROUGH  
**INTERIOR  
DESIGN**

## WHAT WE OFFER



Residential  
interior



Corporate  
interior



Construction  
Projects

# OUR CLIENTS



**Brakes India Private Limited**



**ROMAA**  
HOUSING



**INDOCOL**  
Moulding the future



**TIDC INDIA**



**ASHOK LEYLAND**

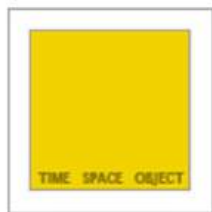


**RKS INTERIORS**

# ARCHITECTS

we have collaborated with

**PTK**  
PROJECT CONSULTANTS LLP



**TSO DESIGN COMMUNE PVT. LTD.**  
Architects

**W** arvind  
varuna  
associates



# PROJECT MANAGEMENT CONSULTANTS

*we have collaborated with*



# IN-HOUSE ALUMINIUM FABRICATION UNIT - AMBATTUR



# IN-HOUSE PLYWOOD PROCESSING UNIT - POTHUR



---

## OUR PROJECTS

- 1 TVS BRAKES INDIA  
- JHAGADIA
- 2 BIADS INDIA PRIVATE LIMITED  
- HOSUR
- 3 TVS SUNDARAM-CLAYTON LIMITED  
- THERVOY KANDIGAI
- 4 TVS BRAKES INDIA  
- PROJECTS AND UTILITIES OFFICE
- 5 CENTURY PLY - WINDOWS  
- THERVOY KANDIGAI
- 6 JBK OFFICE  
- CHETPET
- 7 TVS SUNDARAM-CLAYTON LIMITED - WINDOWS  
- THERVOY KANDIGAI
- 8 TVS BRAKES INDIA  
- BAWAL
- 9 LEGGARO COMPOSITES PRIVATE LIMITED  
- MAPPEDU

---

## OUR PROJECTS

- 10 TIDC INDIA  
- AMBATTUR
- 11 JB PRINTS SHOWROOM  
- EGMORE
- 12 TVS BRAKES INDIA  
- CRECHE
- 13 TVS BRAKES INDIA  
- MSE OFFICE
- 14 OPMOBILITY  
- RANIPET (CANTEEN)
- 15 OPMOBILITY  
- RANIPET (DISPLAY)
- 16 UNIVERSAL AUTOMATION SYSTEMS PVT. LTD.  
- WORK STATION
- 17 TROPICAL BREWERIES  
- THERVOY KANDIGAI
- 18 TVS BRAKES INDIA  
- THERVOY KANDIGAI
- 19 PARADISE HOTEL  
- KANCHEEPURAM

**TVS BRAKES INDIA  
JHAGADIA**

**KEY INFORMATION**

Project Type  
Corporate office Area

Carpet Area  
-48000 sq.ft

**Requirements**

- Elevation Glazing
- Aluminum Partition
- Gypsum Partition
- Glass Partition
- Grid Ceiling
- Metal Ceiling
- Wooden Flooring
- Vinyl Flooring
- Work Station
- Furniture
- Cabin
- Pantry
- Restroom

Office Workspace with Elevation  
Glazing, Aluminum Partition,  
glass partition, Flooring, False Ceiling  
Cabin, Conference Table and Chair  
and work station.

**Proposed 3D designs**





COMPLETED SITE IMAGES





**BIADS INDIA  
PRIVATE LIMITED  
HOSUR**

Office Workspace with Elevation  
Glazing, Canopy, Aluminum Partition,  
Glass partition, Flooring, False Ceiling,  
Cabin, Half Partition and Pantry

**KEY INFORMATION**

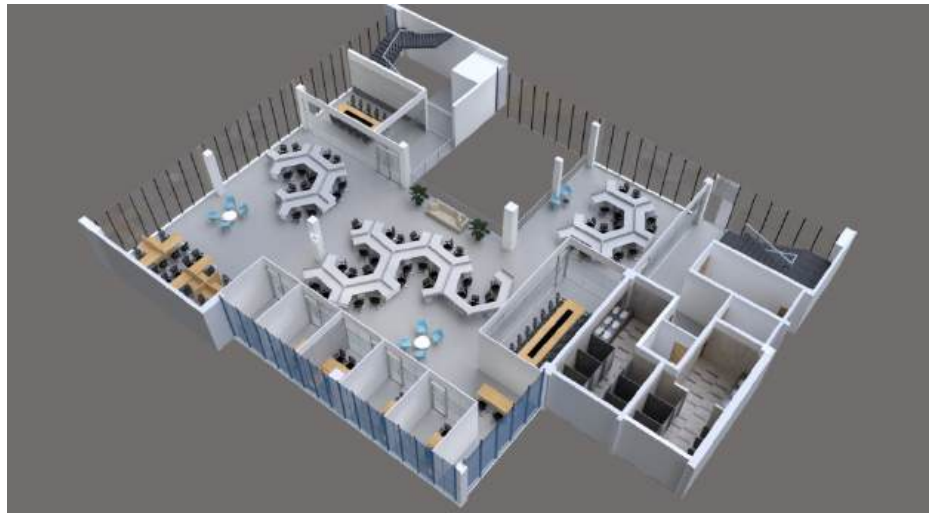
Project Type  
Corporate office Area

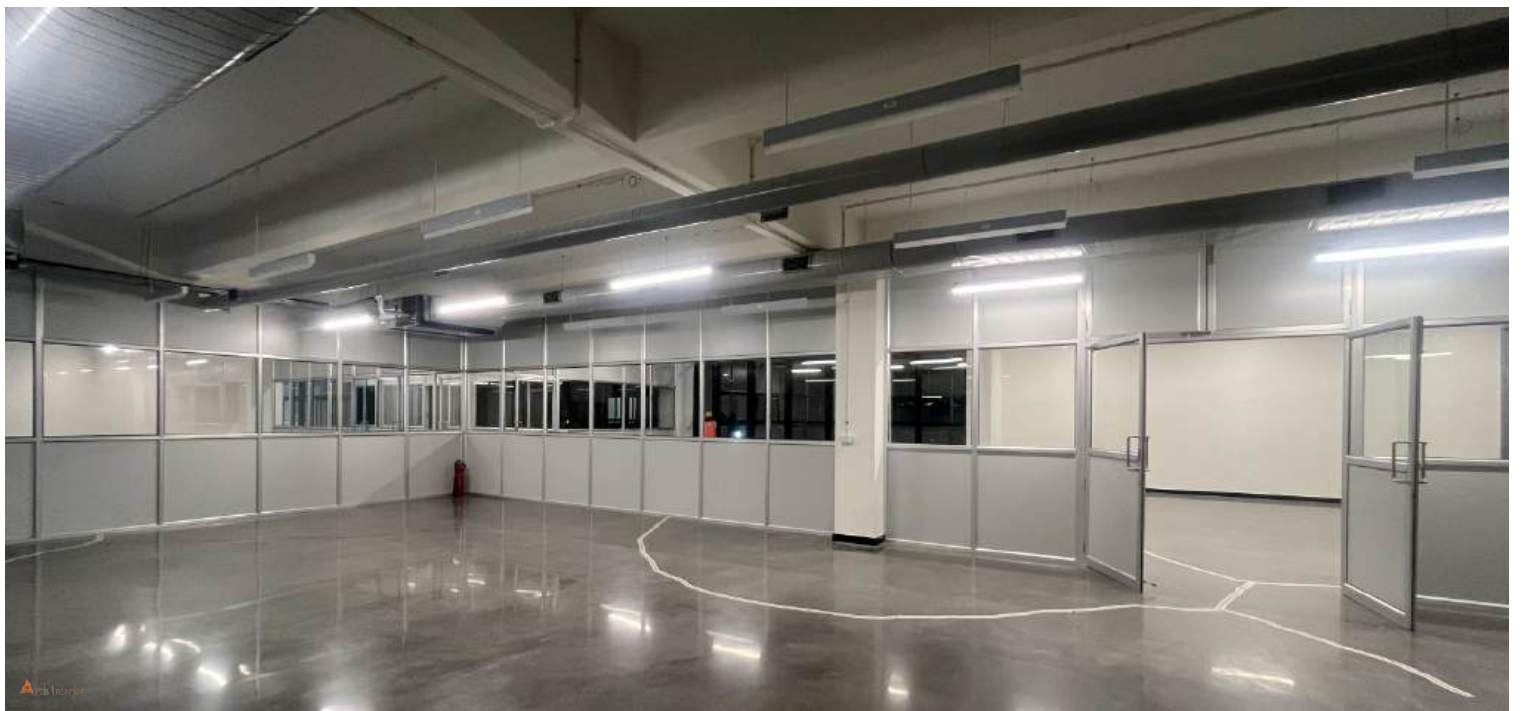
Carpet Area  
-100000 sq.ft

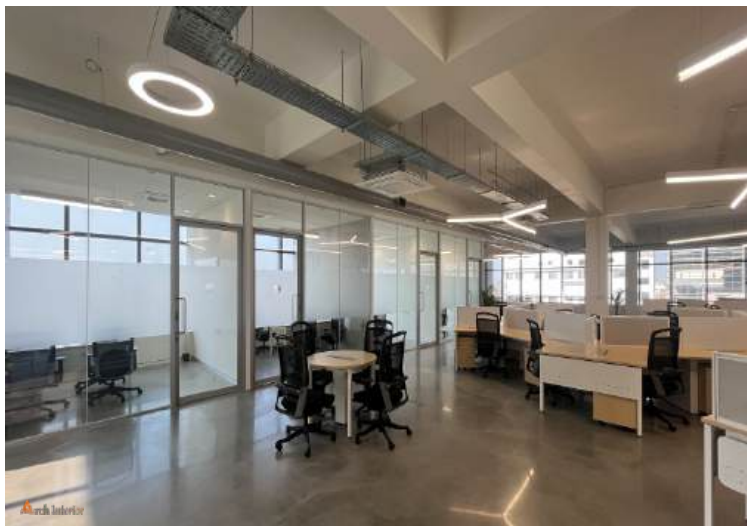
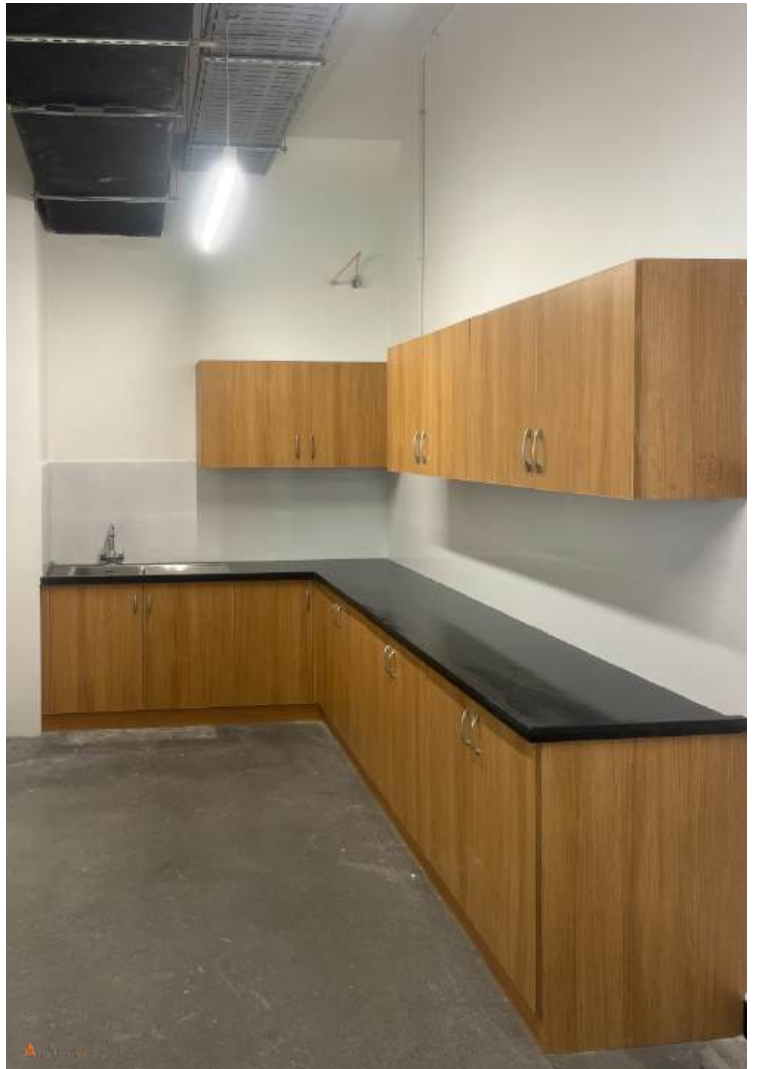
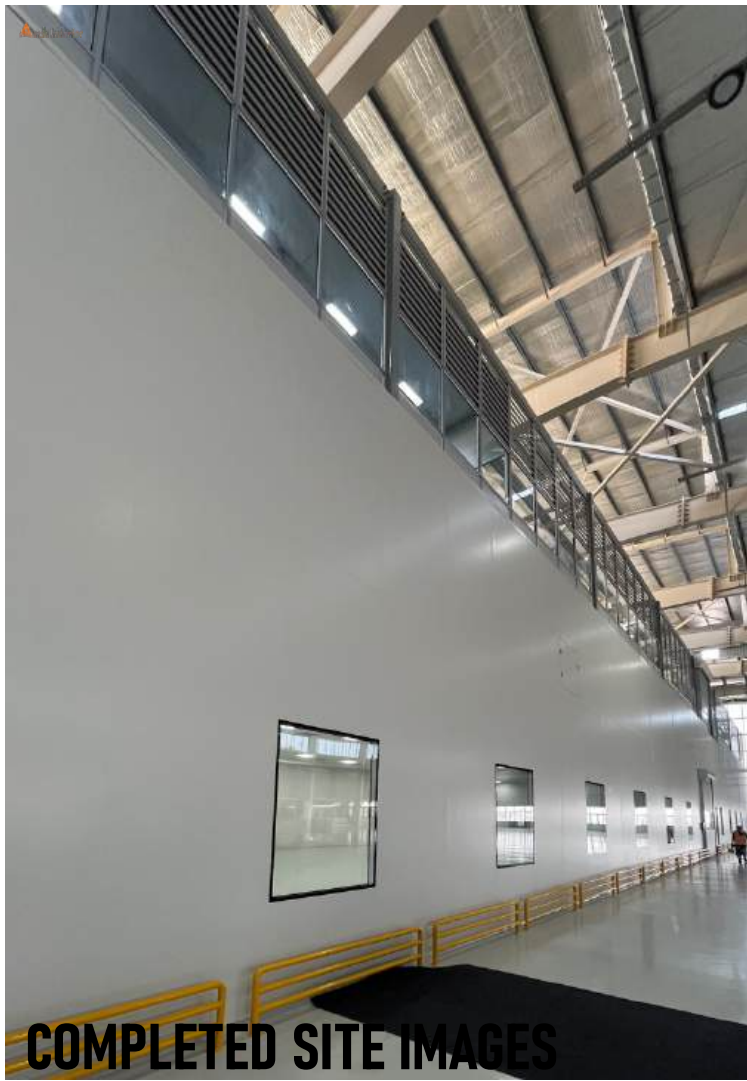
**Requirements**

- Elevation Glazing
- Canopy
- Aluminum Partition
- Gypsum Partition
- Glass Partition
- Gypsum Ceiling
- Half Partition
- Pantry
- Restroom

**Proposed 3D designs**







**TVS SUNDARAM-  
CLAYTON LIMITED -  
THERVOY KANDIGAI**

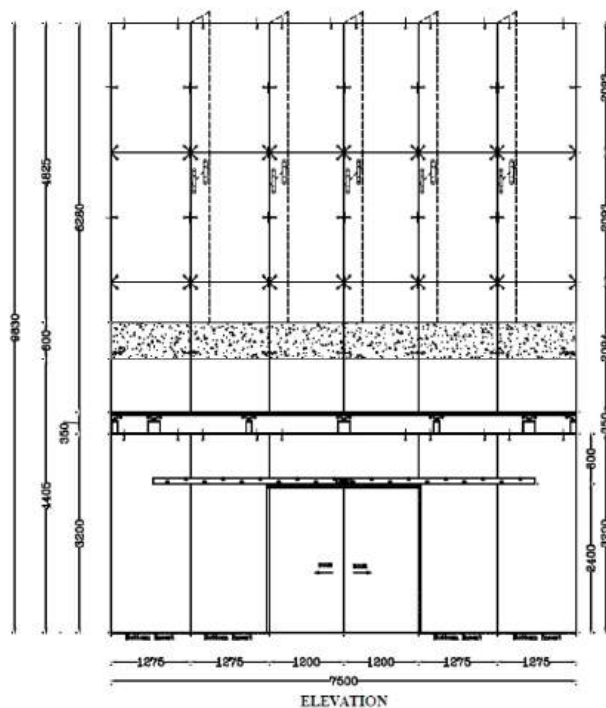
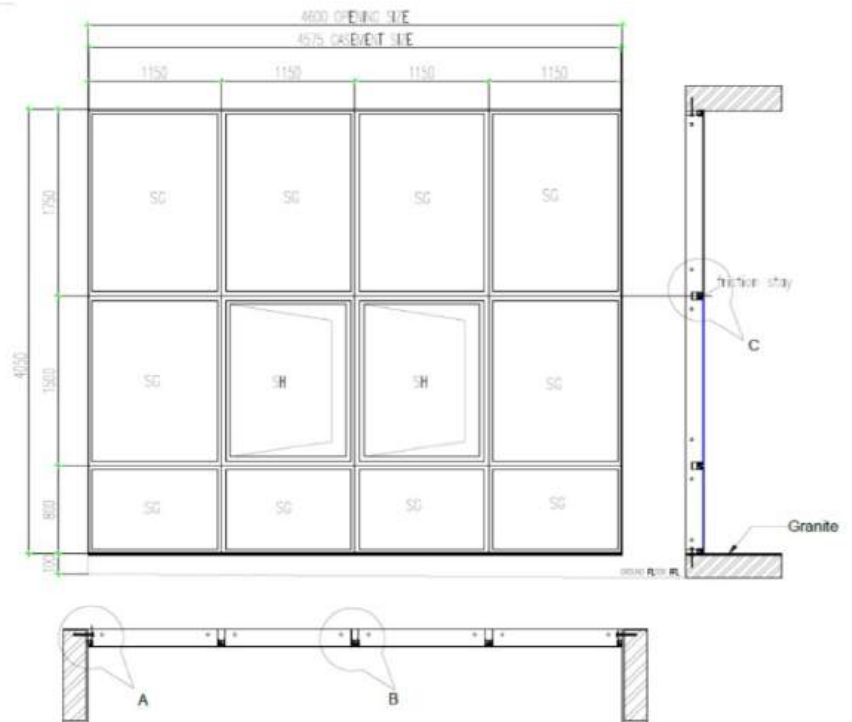
9900 Sqft Semiutilized Glazing  
with Saint Gobin St136 Glass

**KEY  
INFORMATION**  
Project Type  
Office Elevation

Carpet Area  
-9900 sq.ft

- Requirements**
- Structural
  - Glazing
  - Glass Door
  - Windows
  - Ventilators
  - Canopy

**Proposed 3D designs**





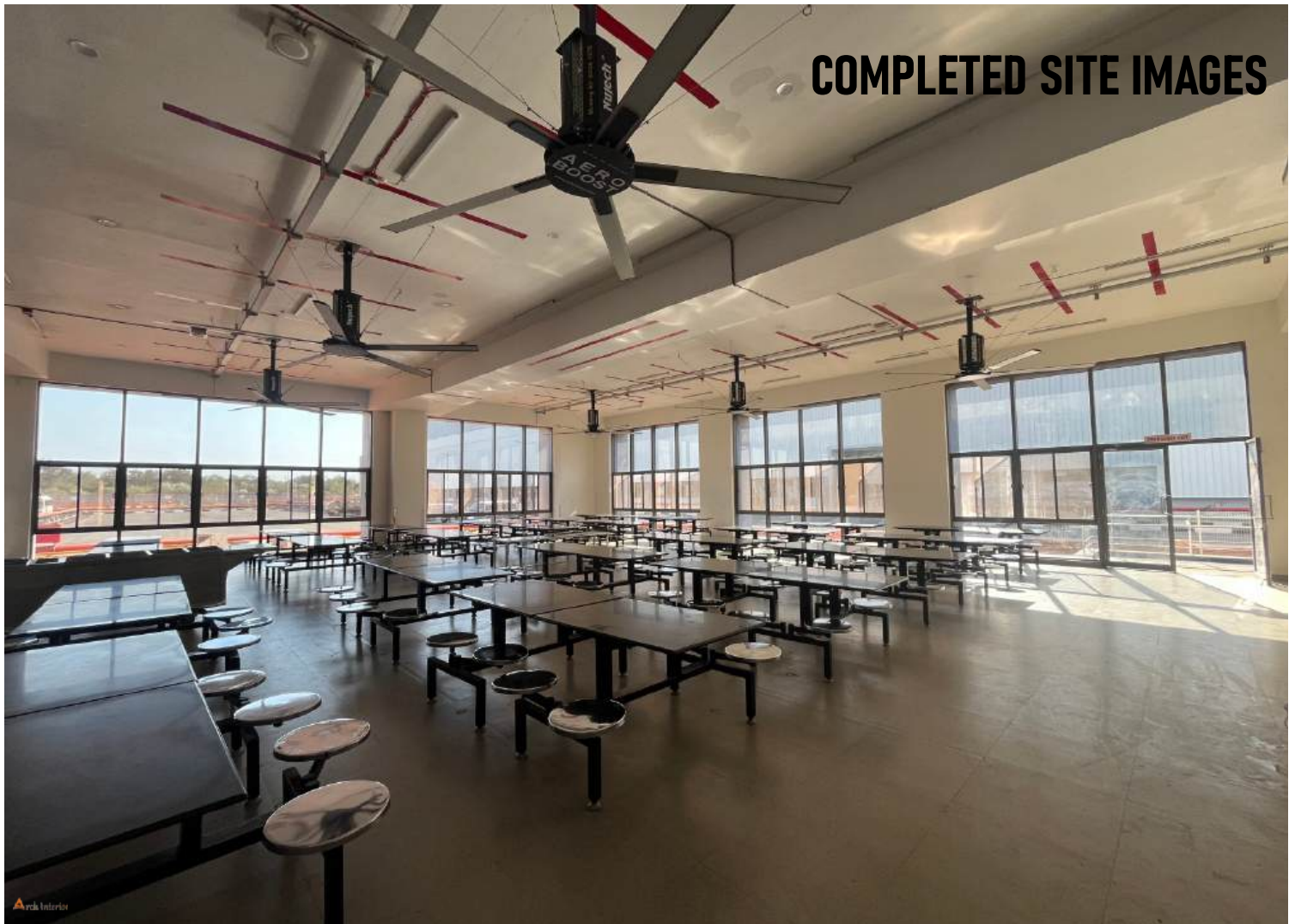
## COMPLETED SITE IMAGES







**COMPLETED SITE IMAGES**





## COMPLETED SITE IMAGES



**TVS BRAKES INDIA -  
PROJECTS AND  
UTILITIES OFFICE**

**KEY INFORMATION**

Project Type  
Corporate office Area

Carpet Area  
-15000 sq.ft

**Requirements**

- Gallery Wall
- False Ceiling
- Workstation
- Partition
- Conference Room
- MD Cabin
- Discussion Table

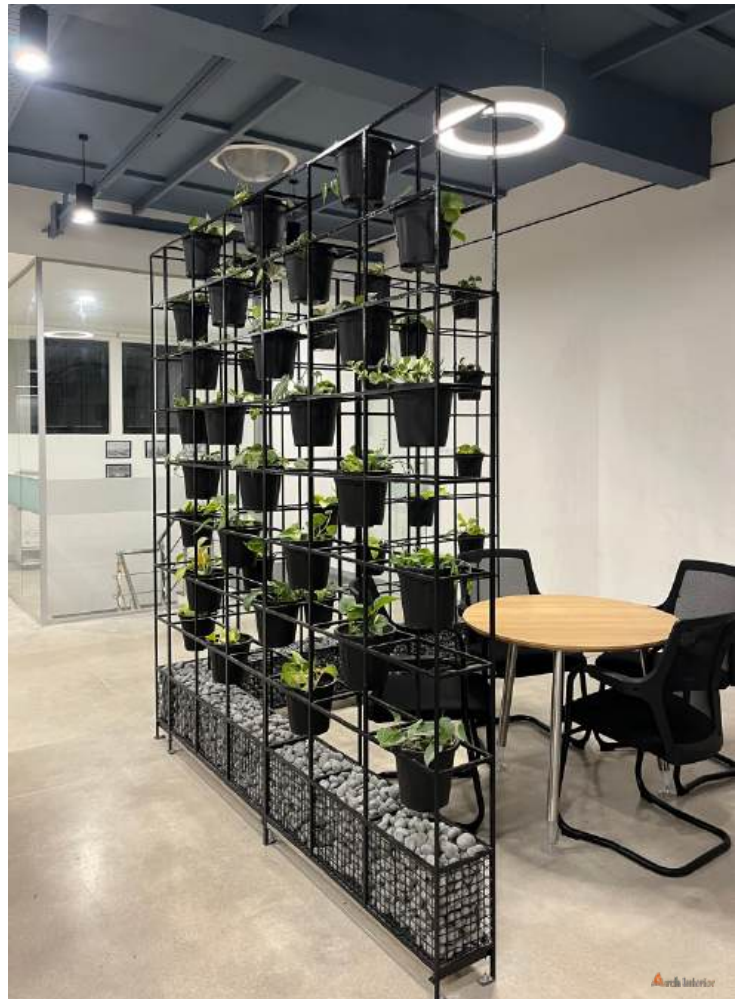
Office Workspace with Gallery wall,  
Work Station, Conference Room,  
Green Partition and Glass Partition

**Proposed 3D designs**



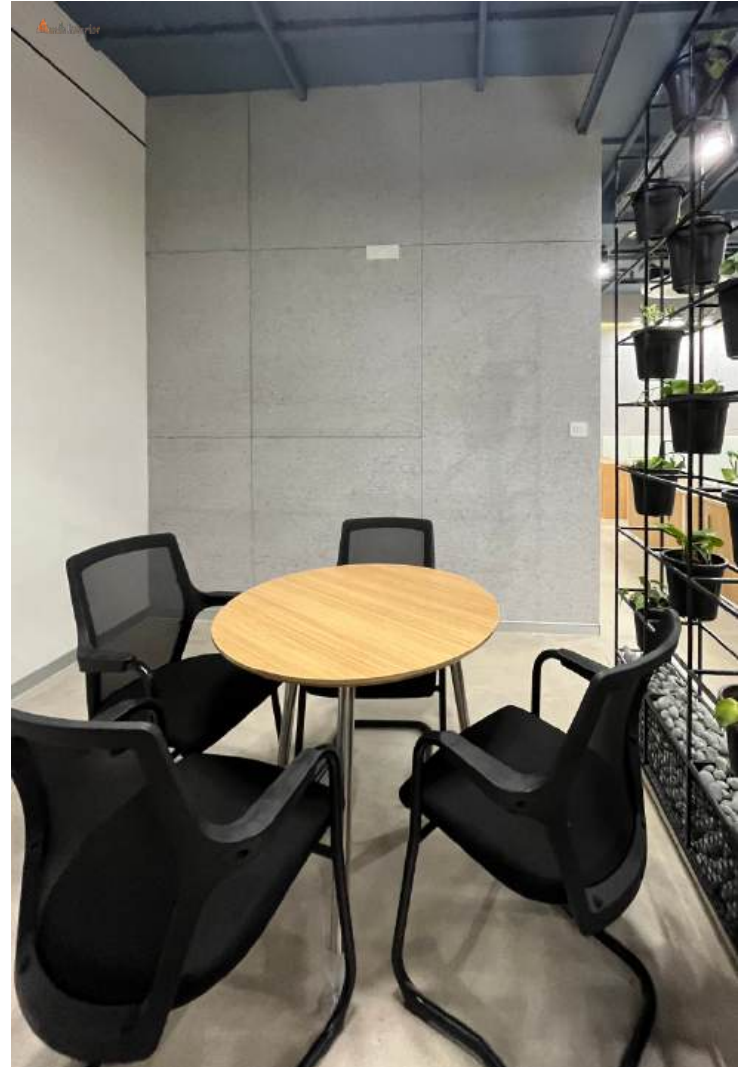


# COMPLETED SITE IMAGES





**COMPLETED SITE IMAGES**



# CENTURY PLY- THERVOY KANDIGAI

1300 Sqm - 42 Series Openable  
cum Fixed Window with  
Saint Gobain 6mm Toughened Glass

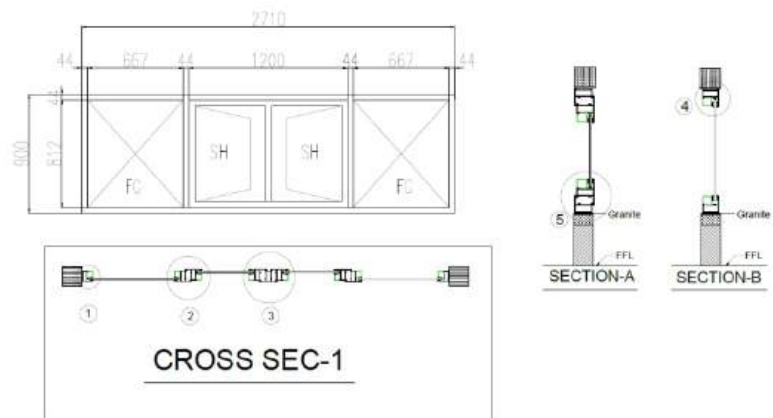
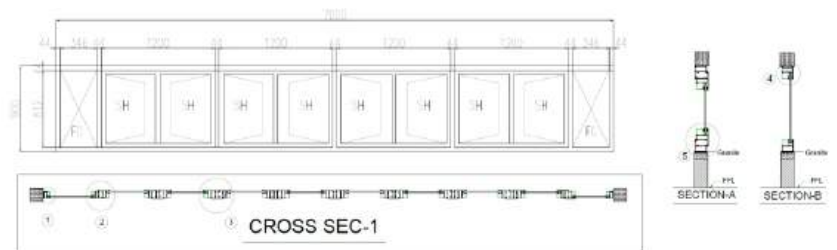
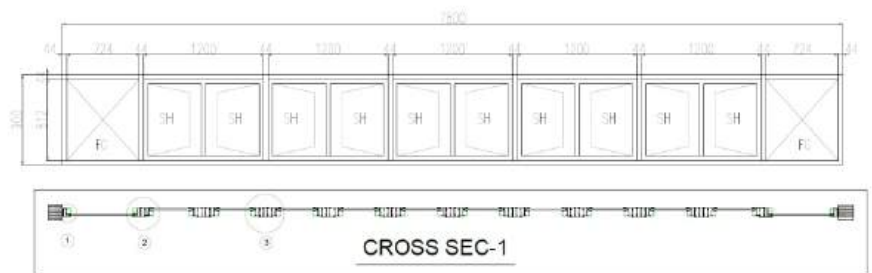
KEY INFORMATION  
Project Type  
Aluminium Windows

Area  
-1300 sq.m

## Requirements

- Glazing
- \* Glass
- 6mm Clear Glass
- Make- Saint Gobain
- Process- Toughened
- \* Aluminium
- Make - Jindal
- Gaskets- EPDM Quality
- Anodising - AMC 608
- Choco Bronze Matt

## Proposed 3D designs



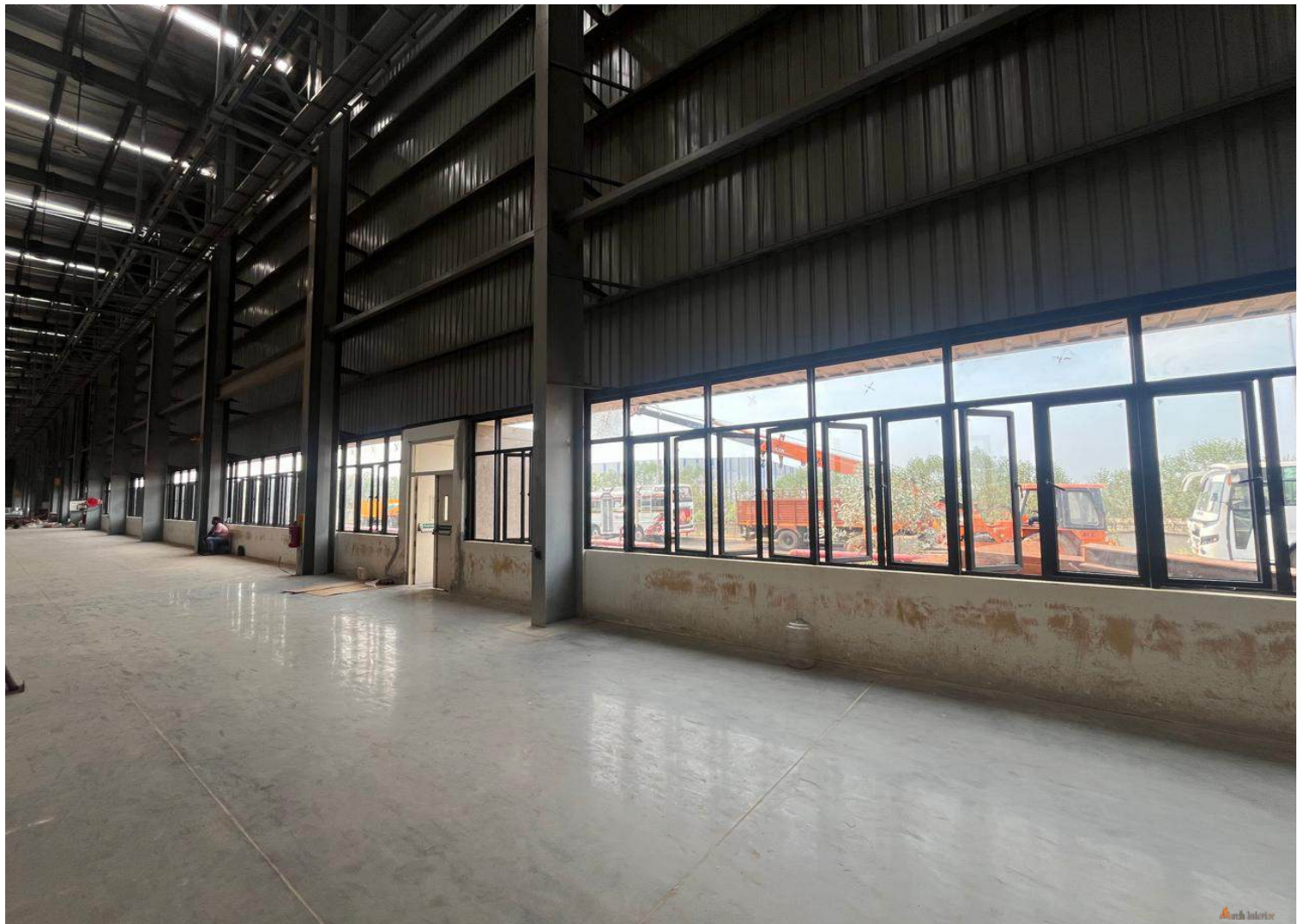
# COMPLETED SITE IMAGES





**COMPLETED SITE IMAGES**





**JBK OFFICE  
CHETPET**

Office Workspace with Elevation  
Glazing, Glass partition, Soffit  
Ceiling, Micro Concrete Wall Finish,  
Carpet Flooring, Cabin,  
Conference Table and work station.

**KEY INFORMATION**

Project Type  
Corporate office Area

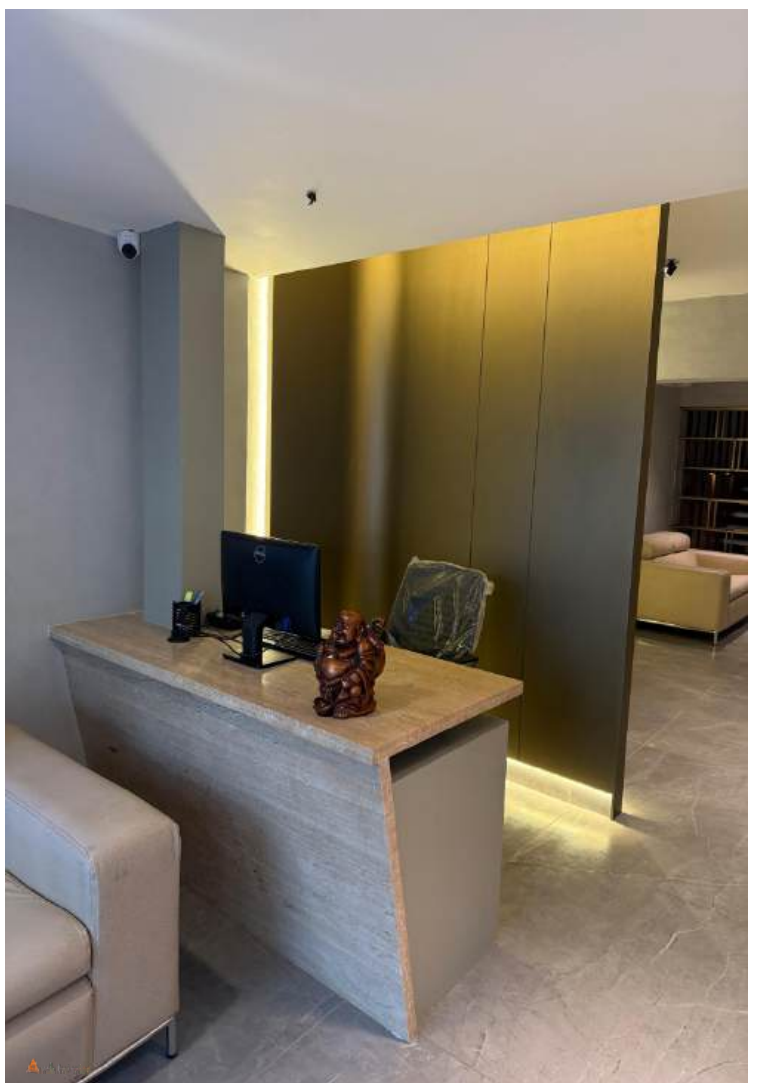
Carpet Area  
-4000 sq.ft

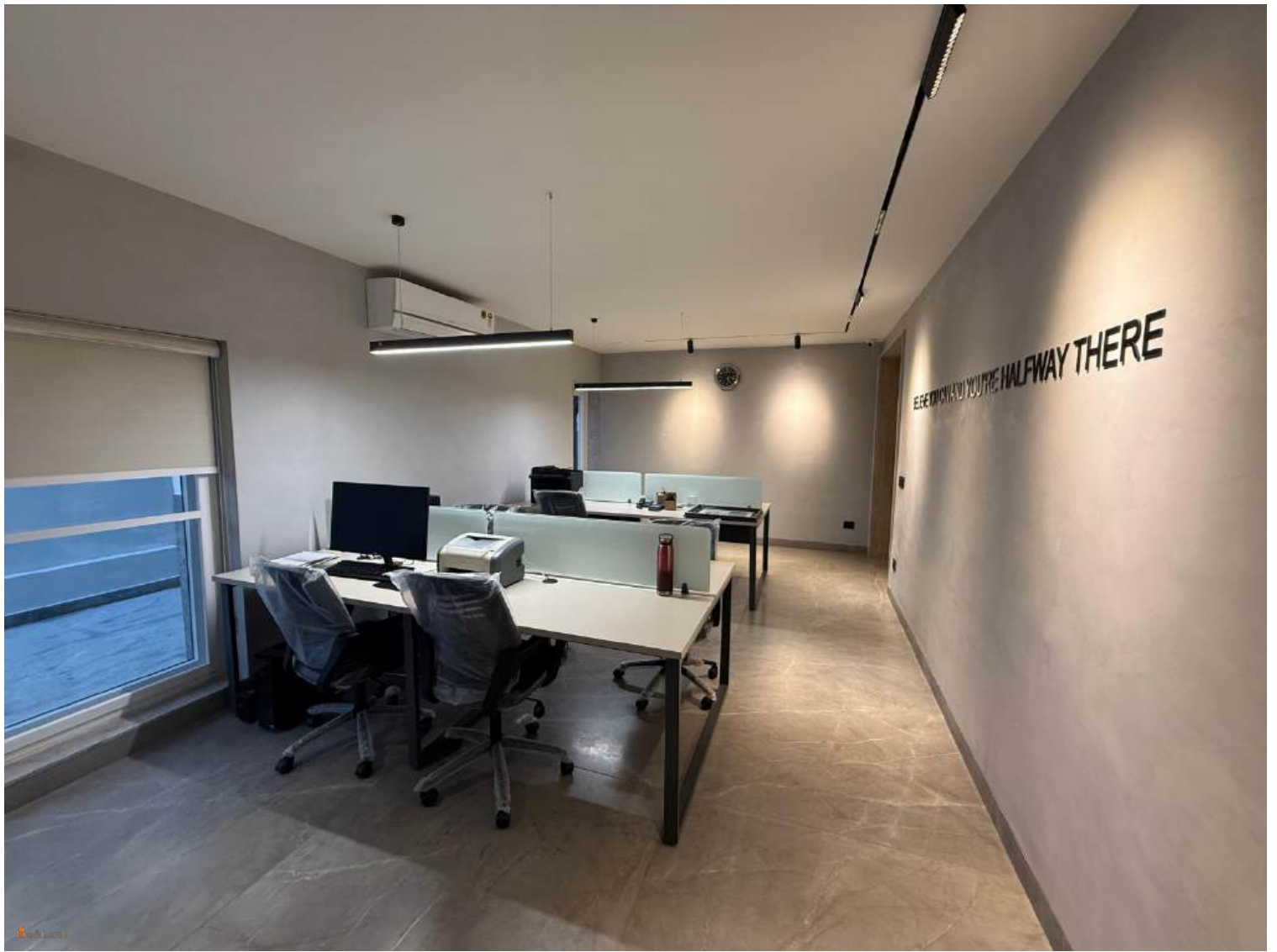
**Requirements**

- Elevation Glazing
- Slim Aluminum Partition
- Gypsum Partition
- Glass Partition
- Gypsum Ceiling
- Soffit Ceiling
- Micro Concrete Wall Finish
- Carpet Flooring
- Work Station
- MD Table
- Conference
- Pantry
- Restroom

**Proposed 3D designs**









**TVS SUNDARAM-  
CLAYTON LIMITED -  
THERVOY KANDIGAI**

**750 sqm - 42 Series Openable  
cum Fixed Window with  
Saint Gobain 6mm Toughened Glass**

**KEY INFORMATION**

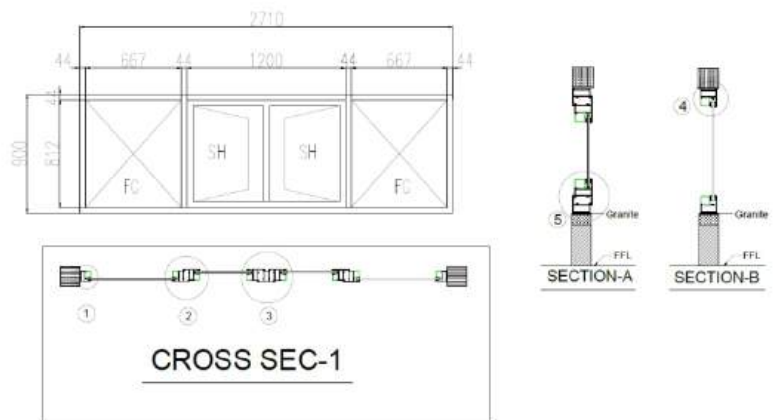
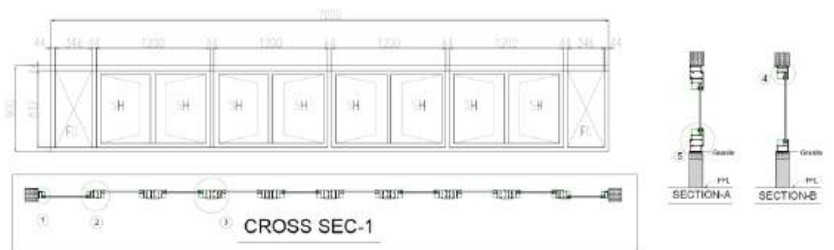
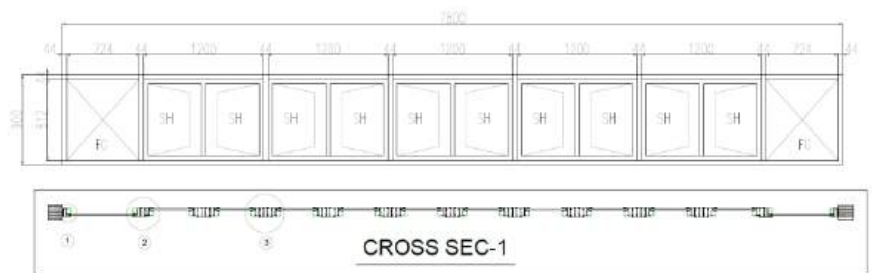
**Project Type  
Aluminium Windows**

**Area  
-750 sq.m**

**Requirements**

- \* Glass
- 6mm Clear Glass
- Make- Saint Gobain
- Process- Toughened
- \* Aluminium
- Make - Jindal
- Gaskets- EPDM Quality
- Anodising - AMC 608
- Choco Bronze Matt

**Proposed 3D designs**





**COMPLETED SITE IMAGES**





**TVS BRAKES INDIA  
BAWAL**

Office Workspace with Elevation  
Glazing, Aluminum Partition,  
glass partition, Flooring, False Ceiling  
Cabin, Conference Table and Chair  
and work station.

**KEY INFORMATION**

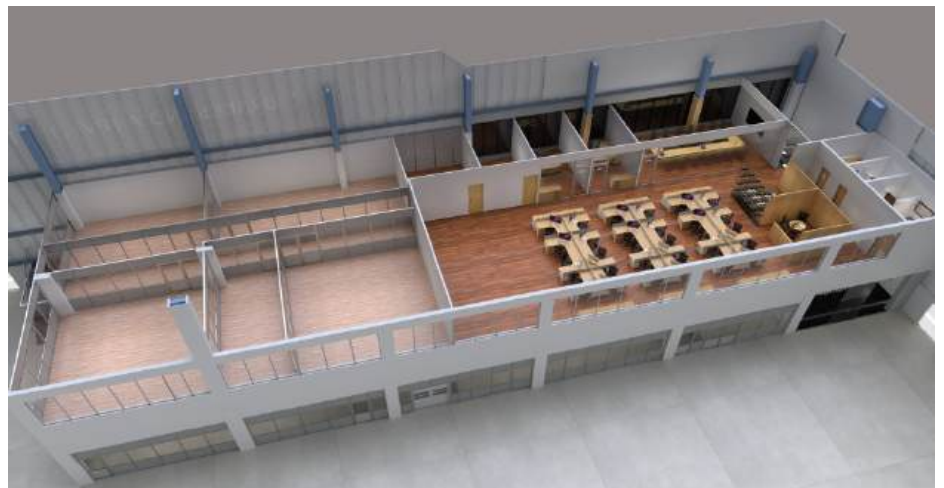
Project Type  
Corporate office Area

Carpet Area  
-3000 sq.ft

**Requirements**

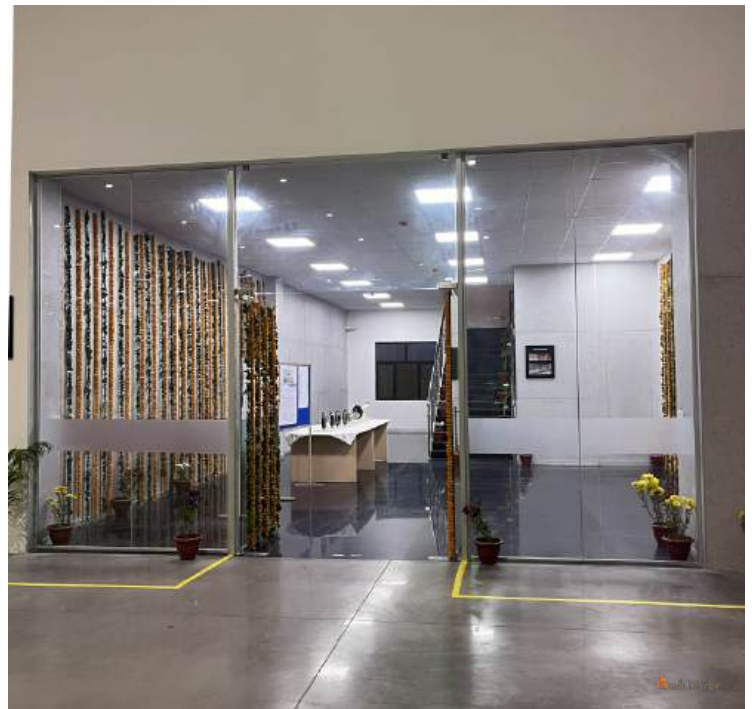
- Elevation Glazing
- Aluminum Partition
- Gypsum Partition
- Glass Partition
- Grid Ceiling
- Metal Ceiling
- Wooden Flooring
- Vinyl Flooring
- Work Station
- Furniture
- Cabin
- Pantry
- Restroom

**Proposed 3D designs**

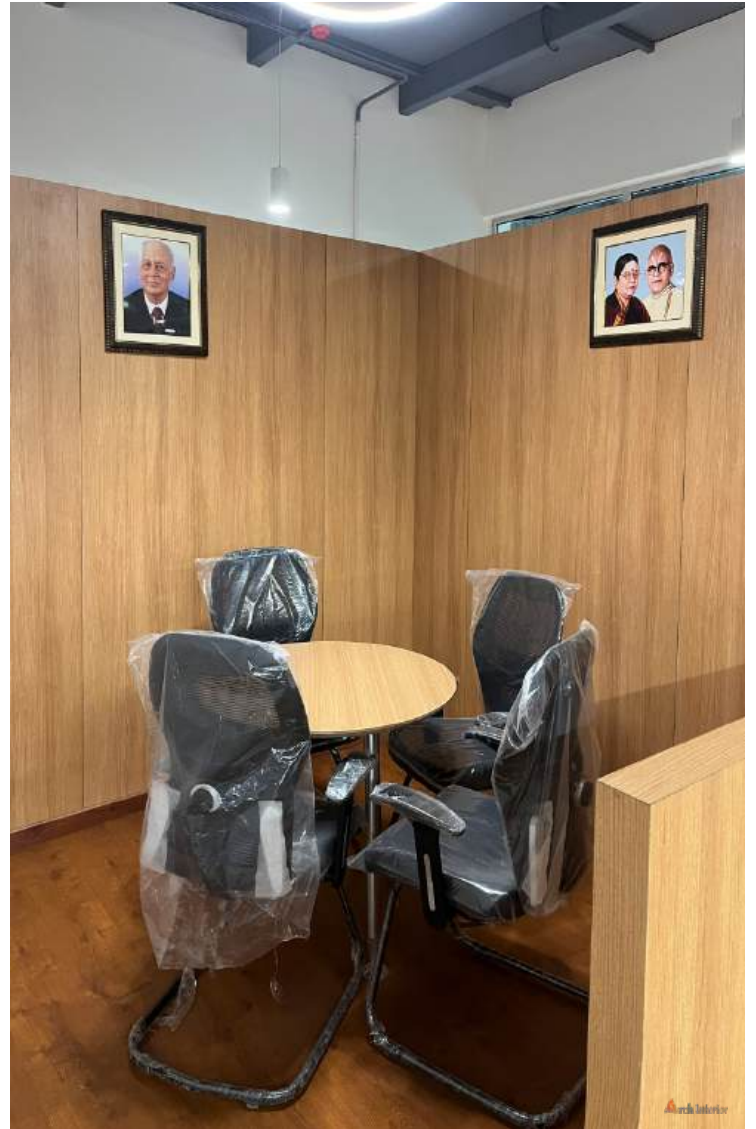
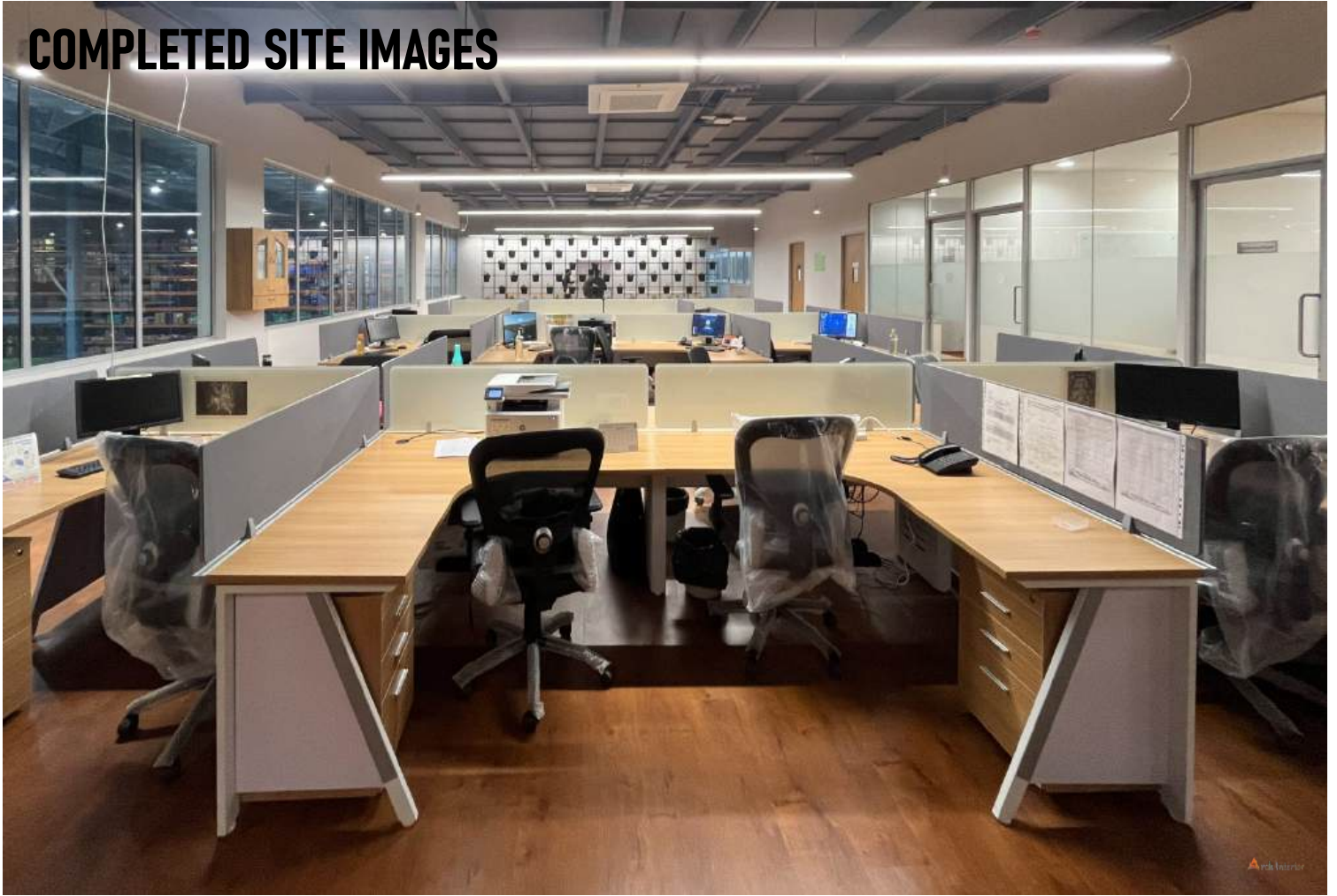




**COMPLETED SITE IMAGES**

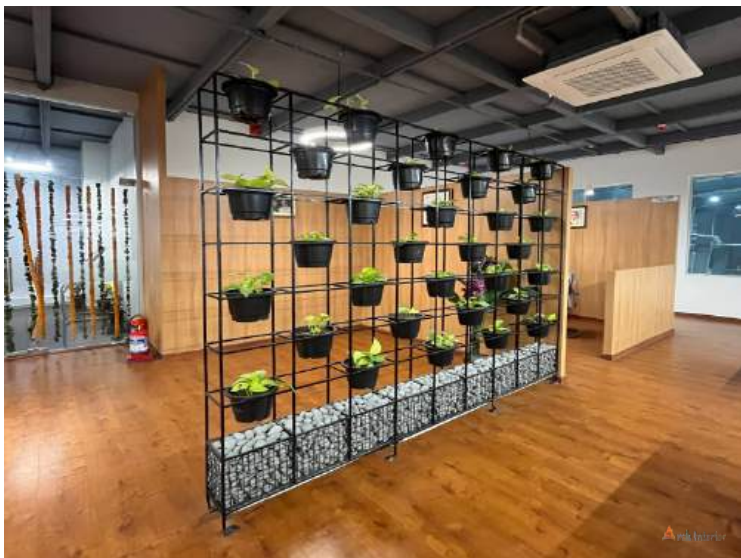


# COMPLETED SITE IMAGES





**COMPLETED SITE IMAGES**



**LEGGARO COMPOSITIES  
PRIVATE LIMITED  
MAPPEDU**

Office work space with Reception area, workstation for 15 employees, Pantry, Conference rooms and Cabins for executives.

**KEY INFORMATION**  
Project Type  
Corporate work space

Carpet Area  
-2500 sq.ft

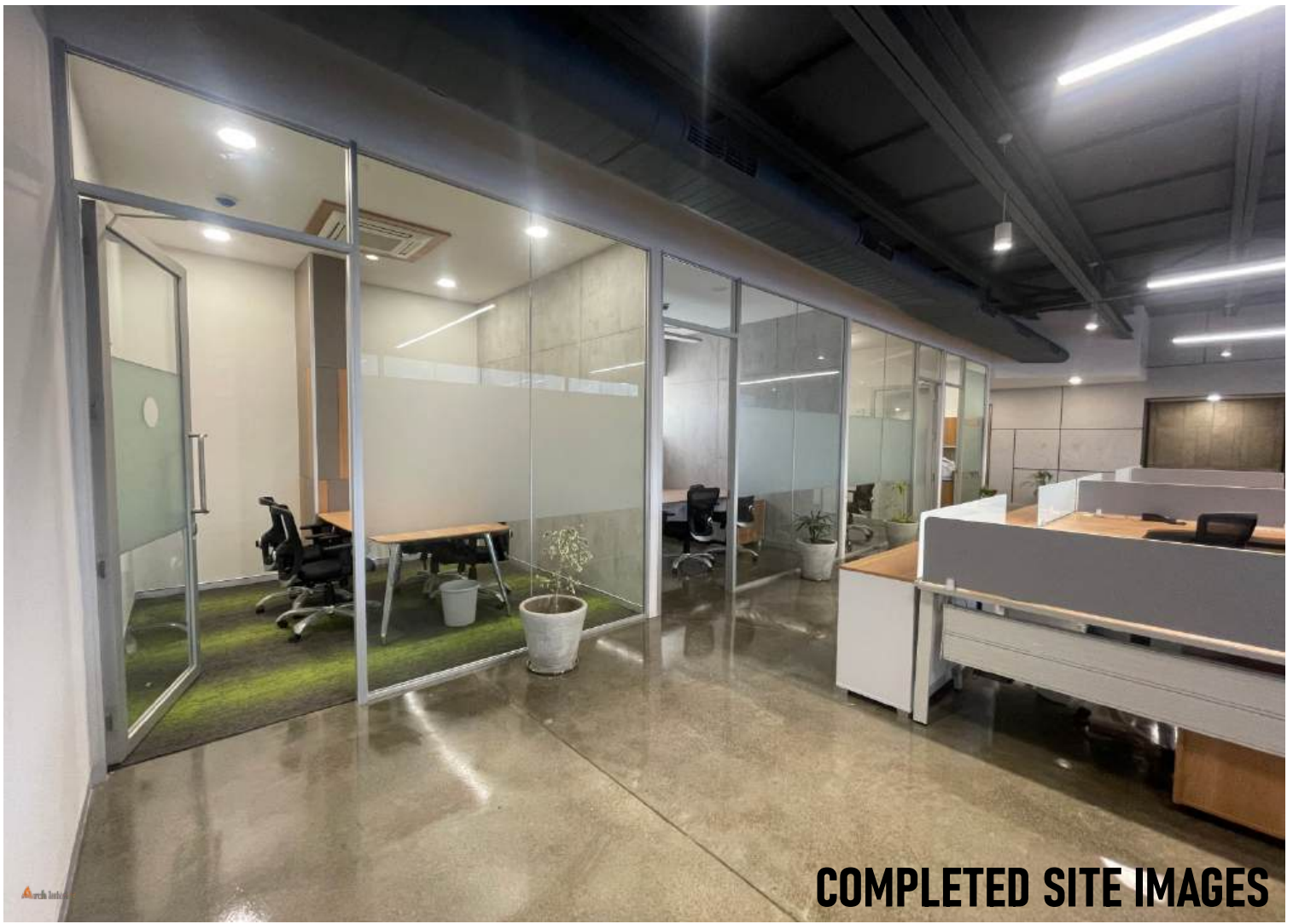
**Requirements**

- Work Station
- Glass Door.
- Fixed glass partition
- Gypsum Partition
- Texture painting on walls with iron inlay.
- False Ceiling
- Column Panelling
- Aluminium Skirting
- Carpet tiles
- Executive table
- Fabric and wooden Panelling

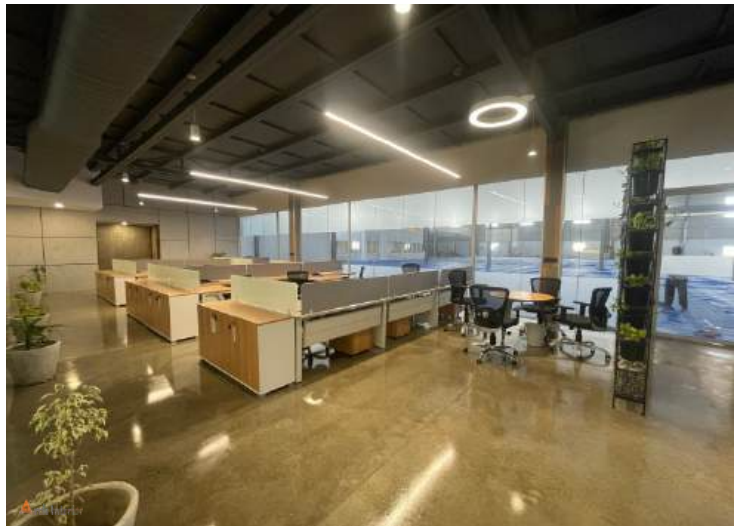
**Proposed 3D designs**







**COMPLETED SITE IMAGES**



**TIDC INDIA  
AMBATTUR**

Office work space with Modular Partition, Modular Workstation, Executive table, Conference table, Discussion table and Cabins.

**KEY INFORMATION**

Project Type  
Corporate work space

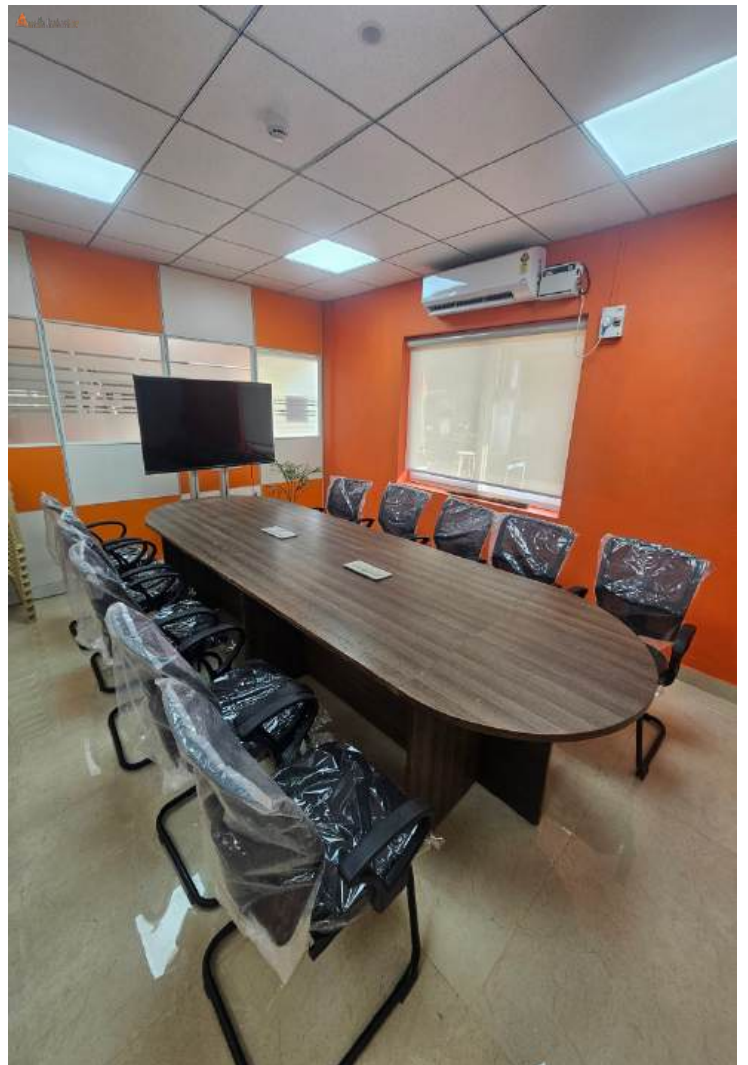
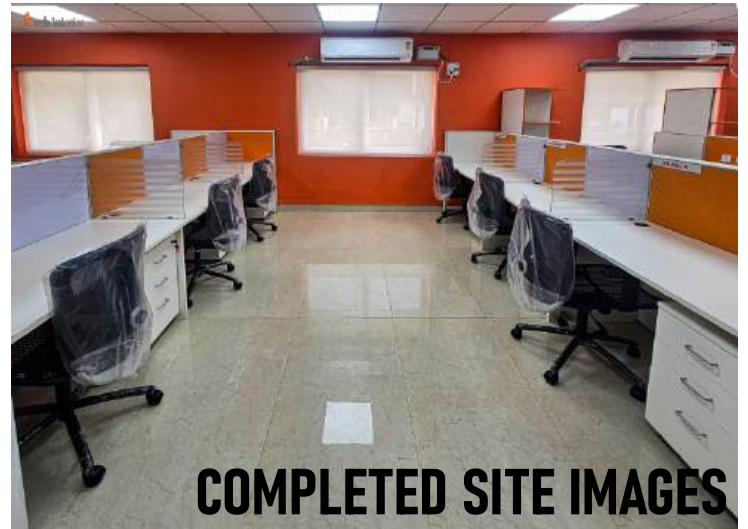
Carpet Area  
-900 sq.ft

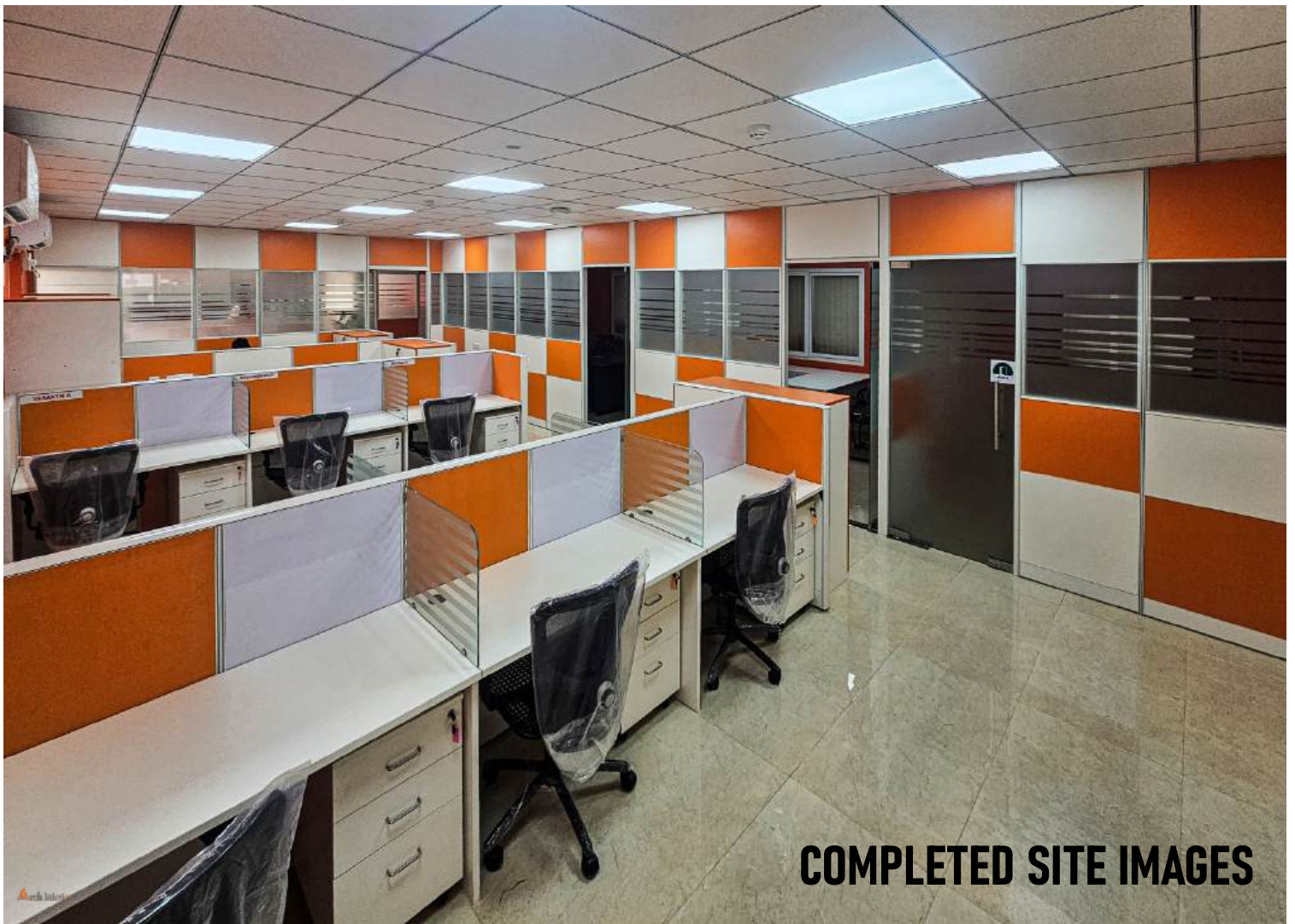
**Requirements**

- Modular Partition
- Glass Door
- Workstation
- Grid Ceiling
- Wallpaper
- Storage
- Conference Table
- Executive Table
- MD Table
- Printed Blinds

**Proposed 3D designs**







**JB KHANNA PRINTS  
- EGMORE**

Vibrant Showroom setup  
with display rack, integrated storage,  
and sleek MD room

**KEY INFORMATION**

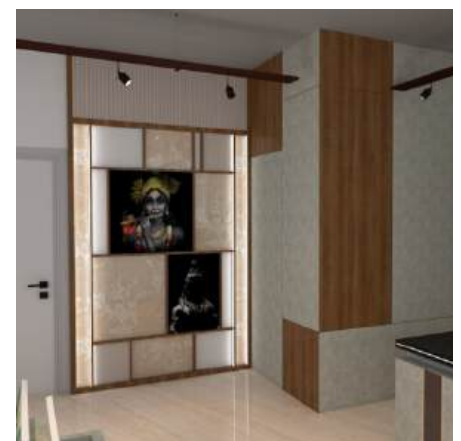
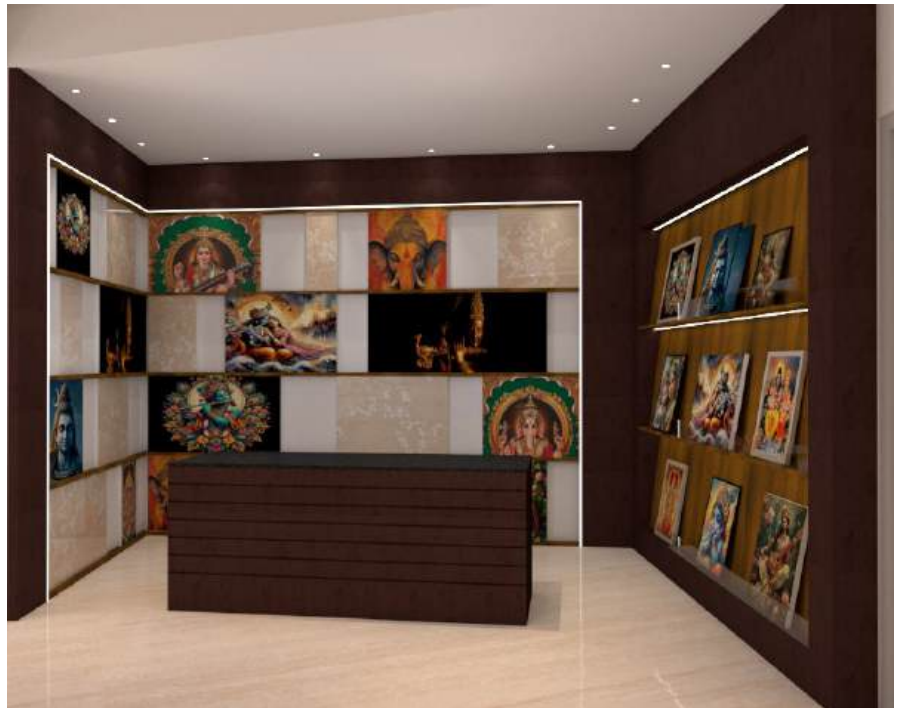
Project Type  
Showroom

Area  
-1700 sq.ft

**Requirements**

- Frame Display
- Integrated Storage
- Display Counter
- Workstation
- MD Room
- Glass Partition
- Name Board
- False Ceiling

**Proposed 3D designs**





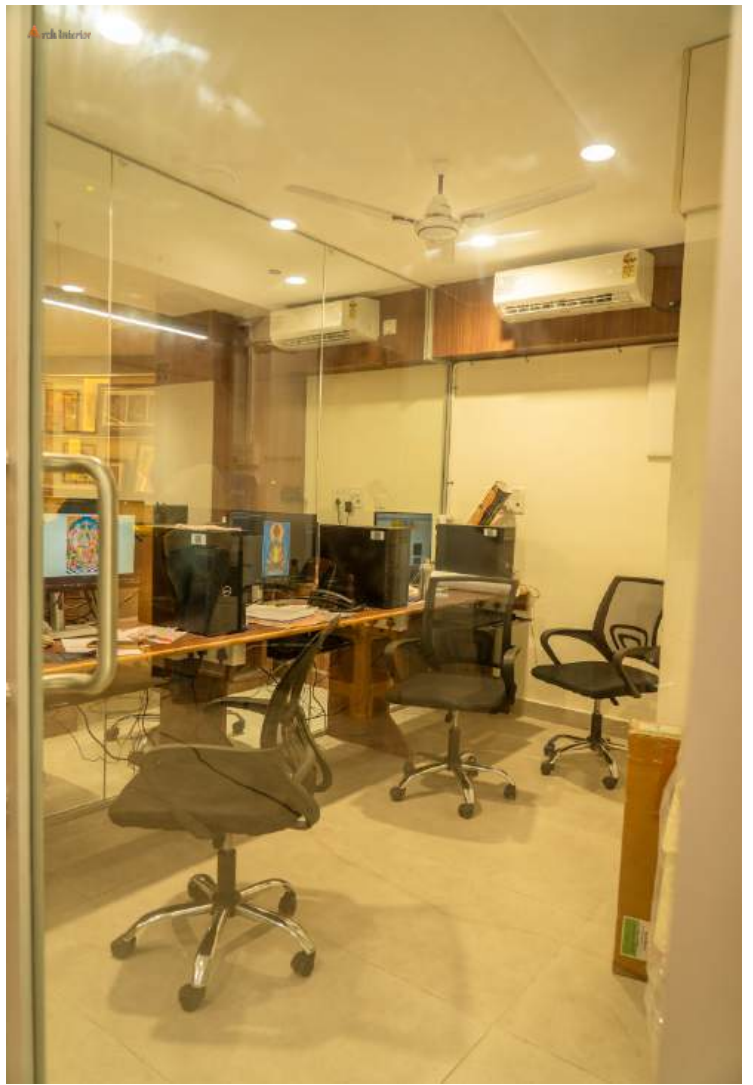
**COMPLETED SITE IMAGE**





**COMPLETED SITE IMAGES**





**COMPLETED SITE IMAGES**



# TVS BRAKES INDIA CRECHE

Creche space with Reception area,  
play area, study area,  
sleeping area, feeding room and  
diaper changing room

## KEY INFORMATION

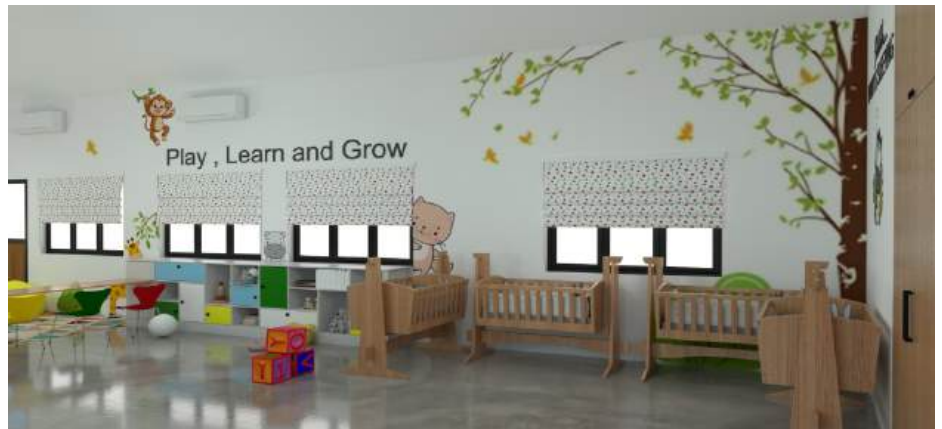
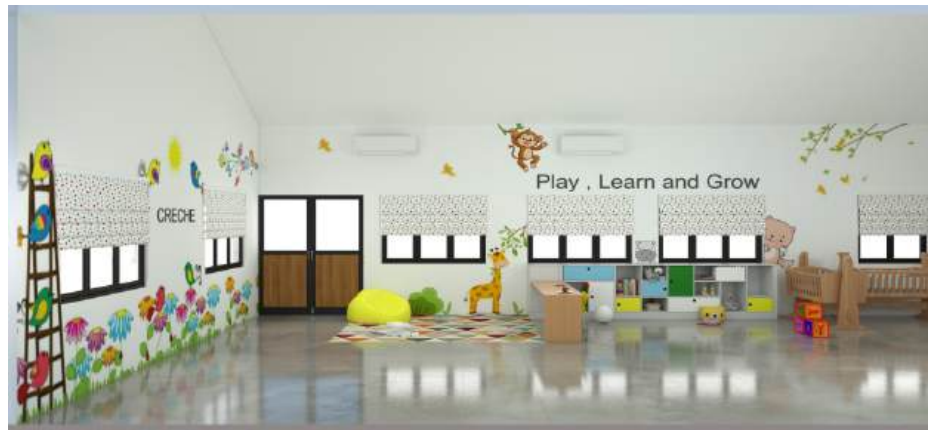
Project Type  
Corporate DayCare

Carpet Area  
-1000 sq.ft

## Requirements

- Day care area
- Aluminium Frame Glass partition.
- Glass partition Sticker
- Reception Table
- Wall art
- Storage
- Kerala Style Roof with Clay Tile

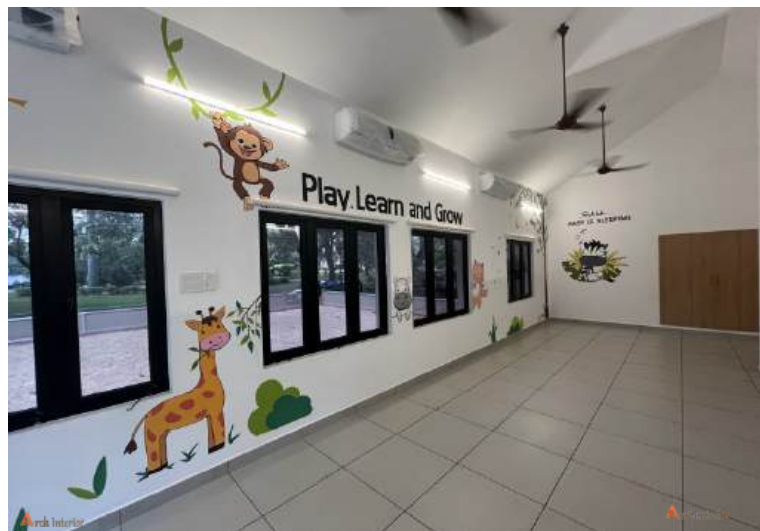
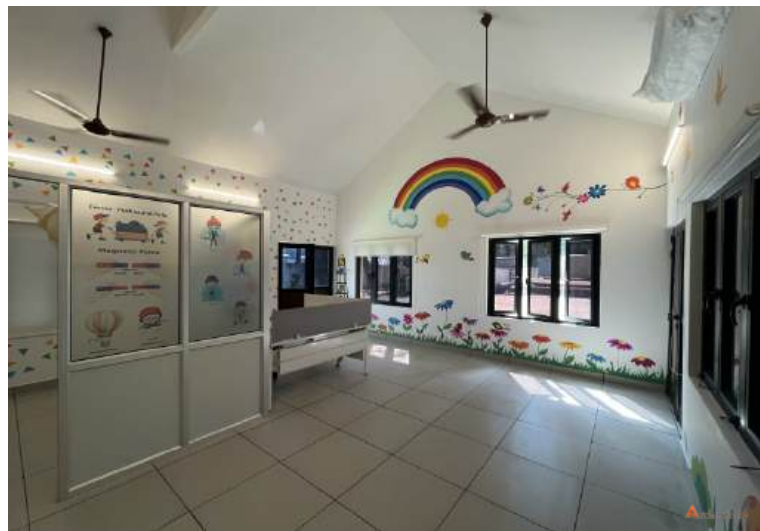
## Proposed 3D designs





**COMPLETED SITE IMAGES**





# TVS BRAKES INDIA MSE OFFICE

Office work space with Reception area, workstation for 90 employees, Discussion Area, Conference rooms and Cabins for executives.

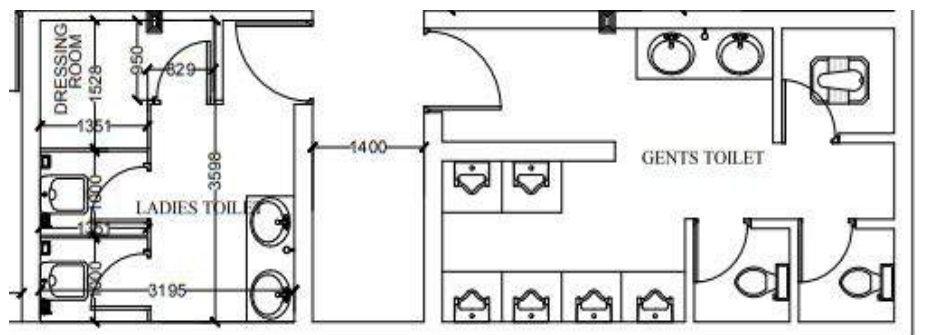
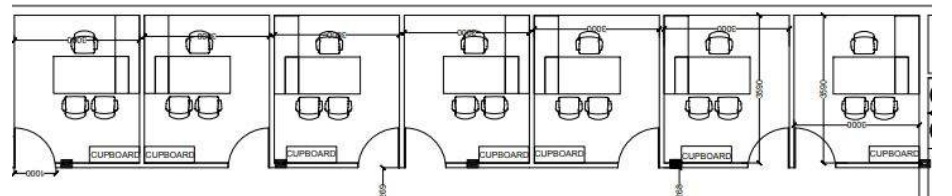
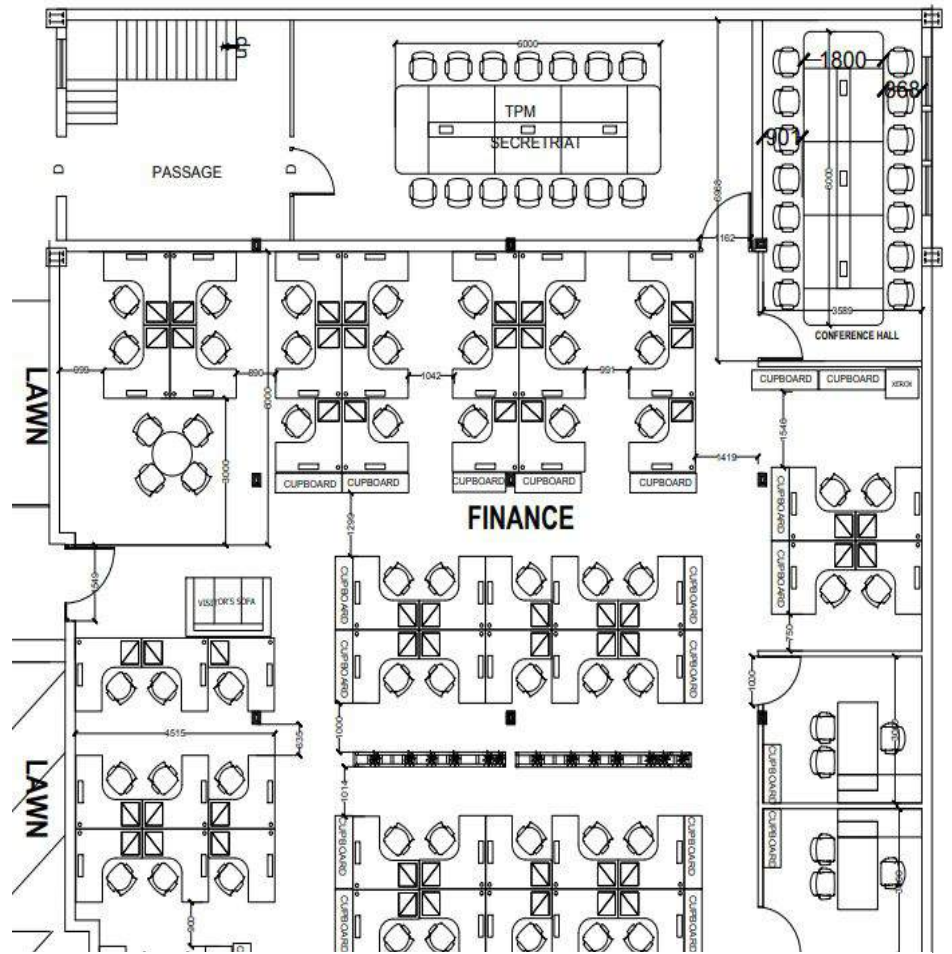
## Proposed 2D designs

**KEY INFORMATION**  
Project Type  
Corporate work space

Carpet Area  
-6950 sq.ft

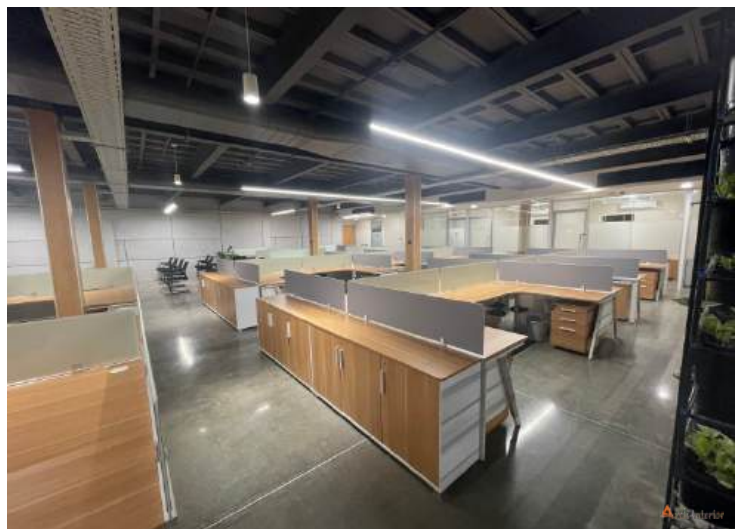
### Requirements

- Work Station
- Aluminium Frame Glass Door.
- Fixed glass partition
- Gypsum Partition
- Texture painting on walls with iron inlay.
- False Ceiling
- Column Panelling
- Aluminium Skirting
- Carpet tiles
- Executive table
- Fabric and wooden Panelling



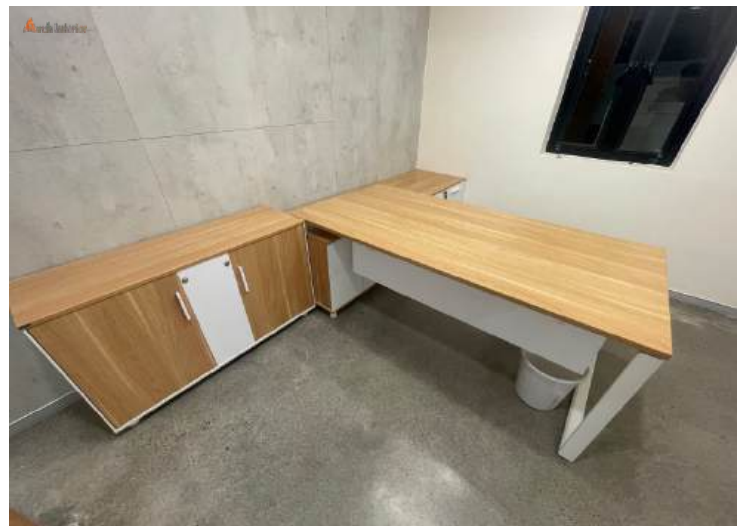


**COMPLETED SITE IMAGES**





**COMPLETED SITE IMAGES**



# OPMOBILITY - RANIPET

The brief required dining space for 60 employees in royal blue and off white theme with minimal decor and grid false ceiling.

## KEY INFORMATION

### Project Type

Dining space for corporate office.

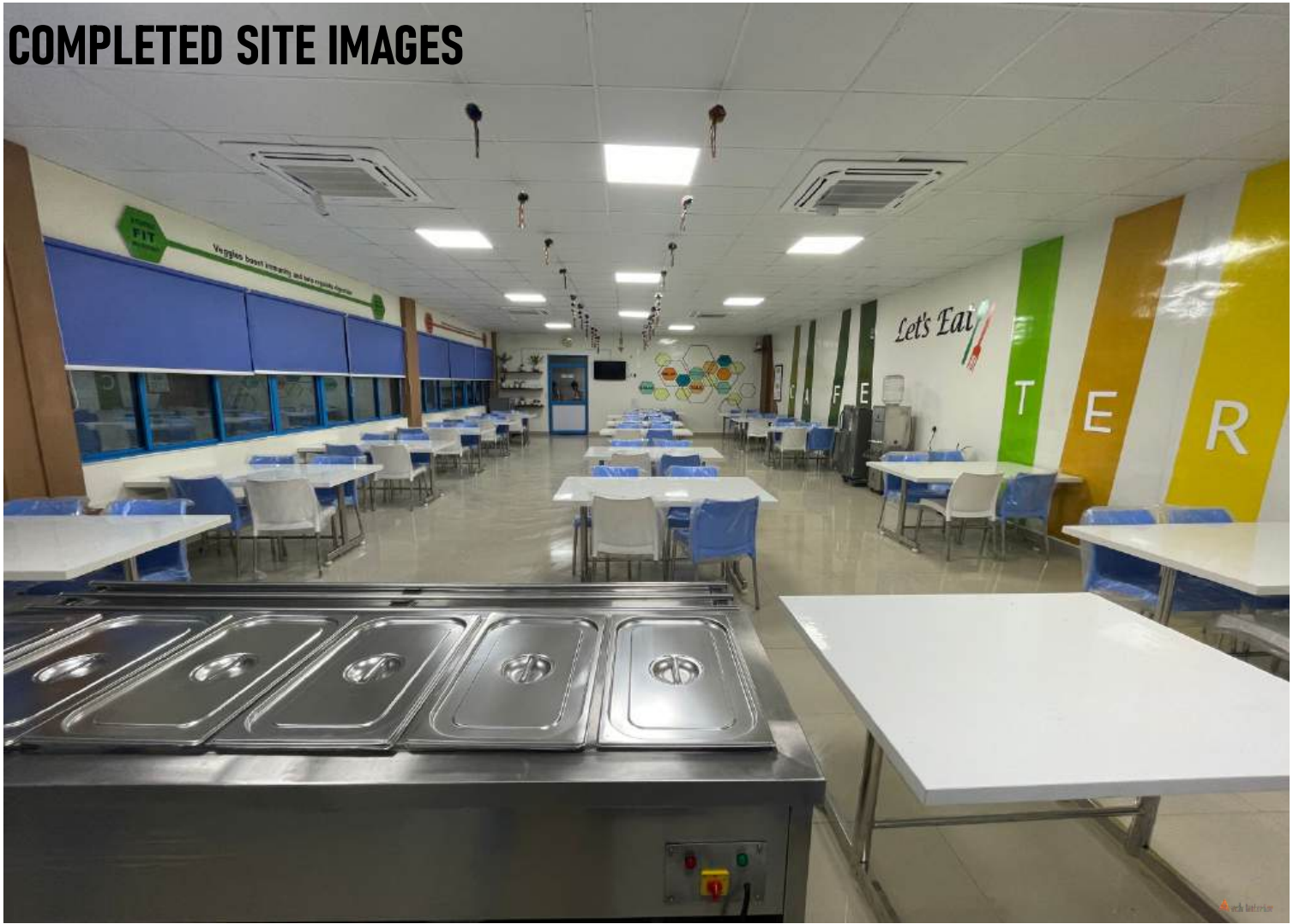
### Requirements

- Seating for 60 persons
- Brain Marie Counter
- Segregated space for food storage and cleaning with 2 sinks.
- 2\*2 grid false ceiling

## Proposed 3D designs



# COMPLETED SITE IMAGES



# OPMOBILITY - RANIPET

A Display area of 6 Safety Non Negotiables and Charts in sandwich boards in royal blue and off white theme.

## Proposed 3D designs

### KEY INFORMATION

Project Type

Display area for corporate office.

### Requirements

- 6 Safety Non Negotiables display
- Digital standee
- 15 Sandwich boards with light to display charts
- Round Glass Table for meeting









# UNIVERSAL AUTOMATION SYSTEMS Pvt. Ltd.

Office Workspace with Reception area, glass partition and work station.

## KEY INFORMATION

Project Type  
Corporate office Area

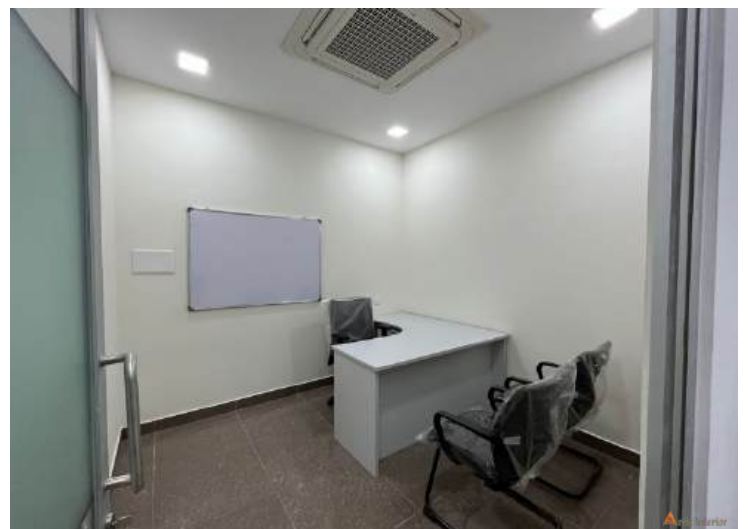
Carpet Area  
-3000 sq.ft

## Requirements

- Workstation
- Reception
- Partition
- Cabin
- Pantry

## Proposed 3D designs







**TROPICAL BREWERIES  
THERVOYKANDIGAI**

**KEY INFORMATION**

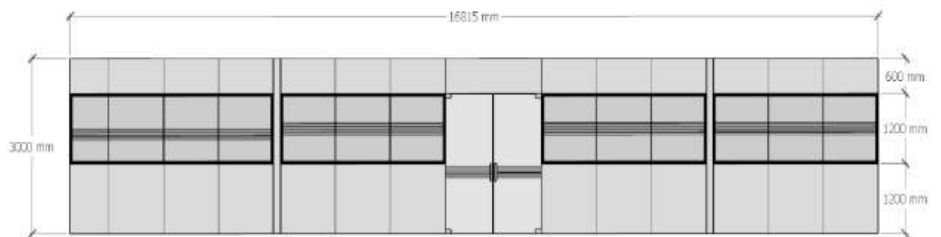
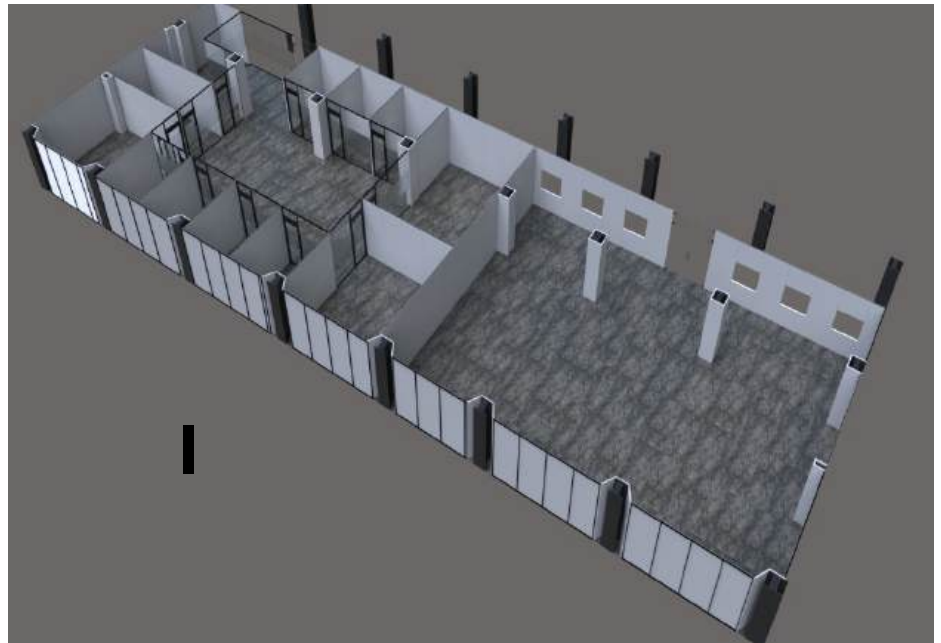
Project Type  
Corporate office Area

Carpet Area  
8250 sq.ft

- Requirements
- Workstation
  - Partition

Office Workspace with  
glass partition, and work station.

**Proposed 3D designs**



# COMPLETED SITE IMAGES



TVS BRAKES INDIA  
THERVOY KANDIGAI

KEY INFORMATION

Project Type  
Corporate office Area

Carpet Area  
-15,000 sq.ft

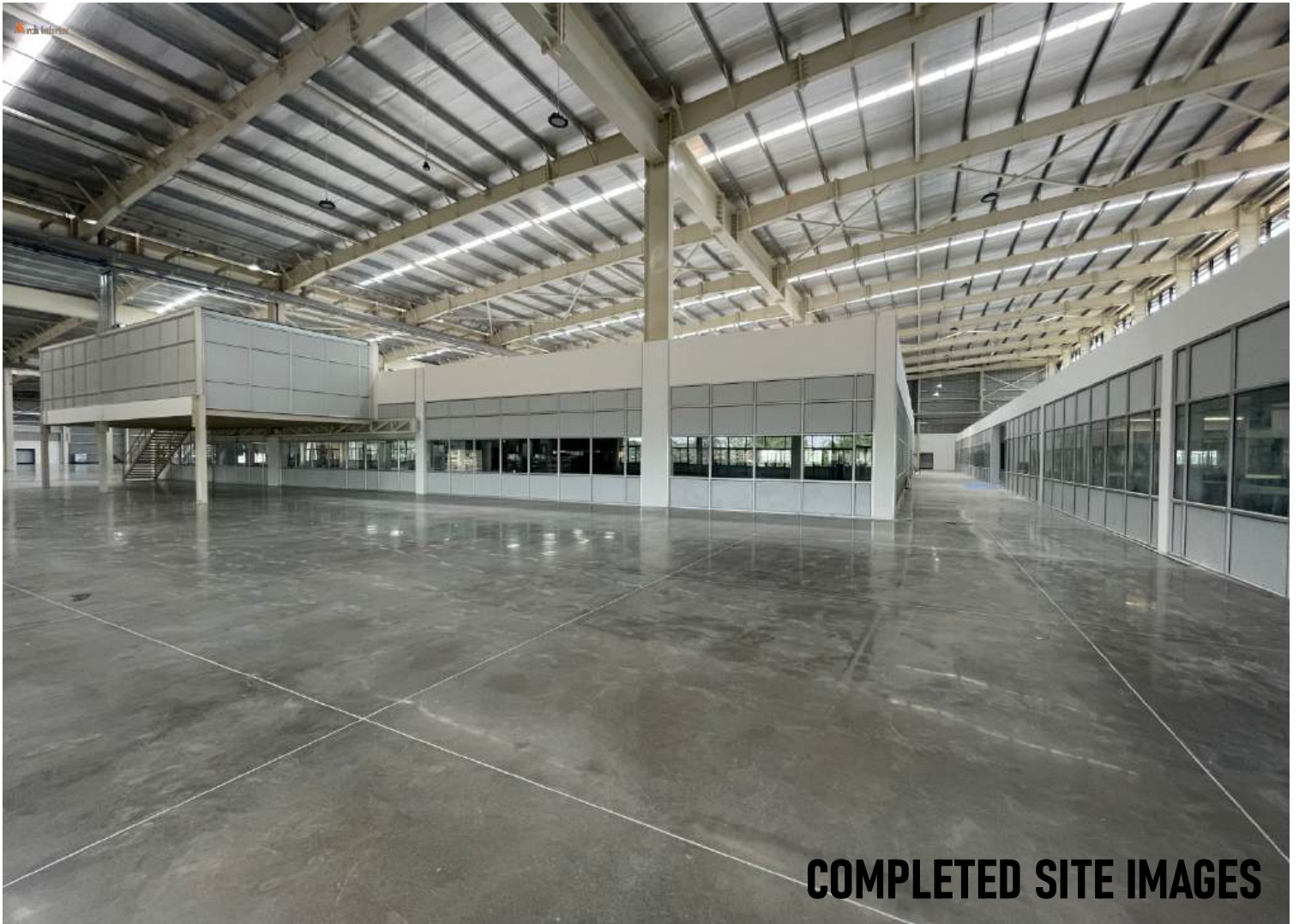
Requirements

- False Ceiling
- Workstation
- Partition
- Mobility Display Wall

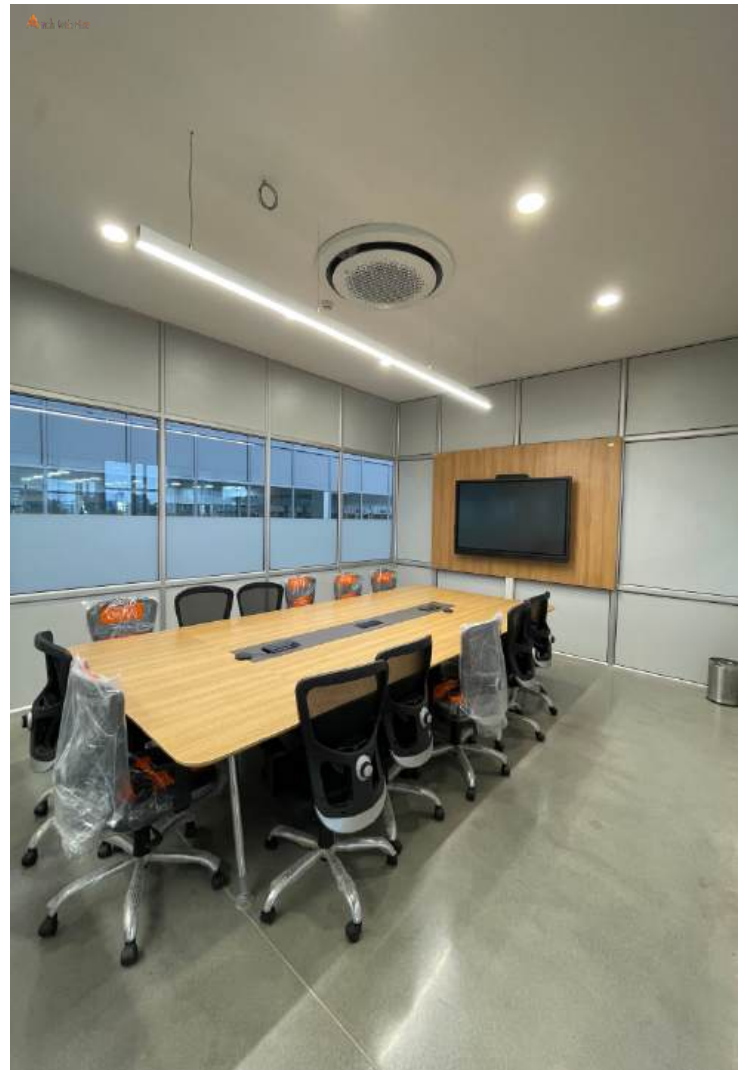
Office Workspace with Aluminium framed glass partition, 2\*2 false ceiling and work station.

Proposed 3D designs





**COMPLETED SITE IMAGES**





# PARADISE HOTEL KANCHEEPURAM

The brief required Granite and Tile Laying for walls and floors, Gypsum and wooden False Ceiling, UPVC Windows with mosquito mesh, Shower Cubicle for bathrooms and interiors for 20 rooms with 10 rooms on each floor.

## Proposed 2D designs

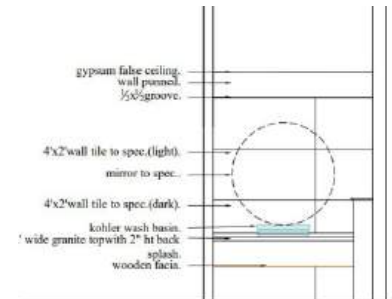
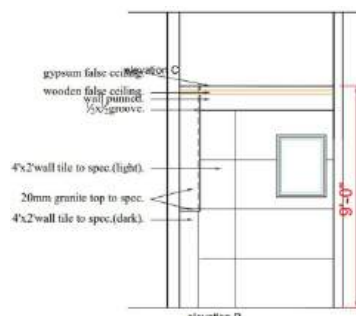
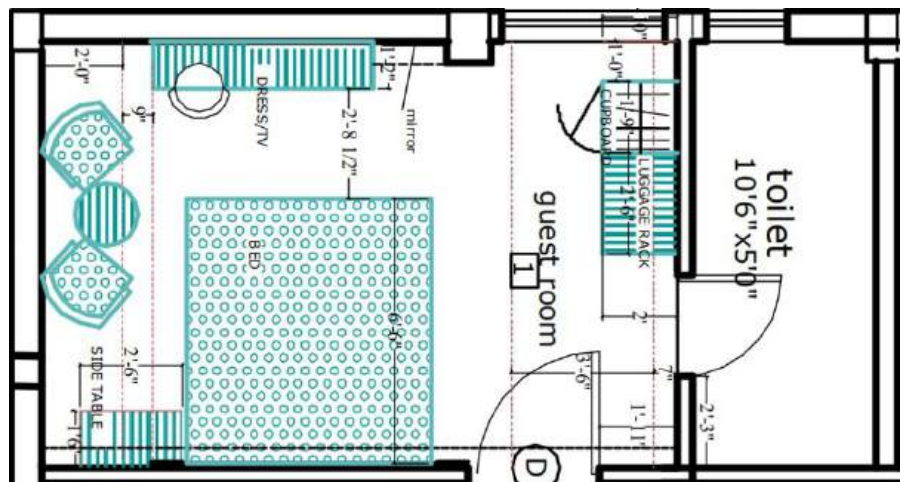
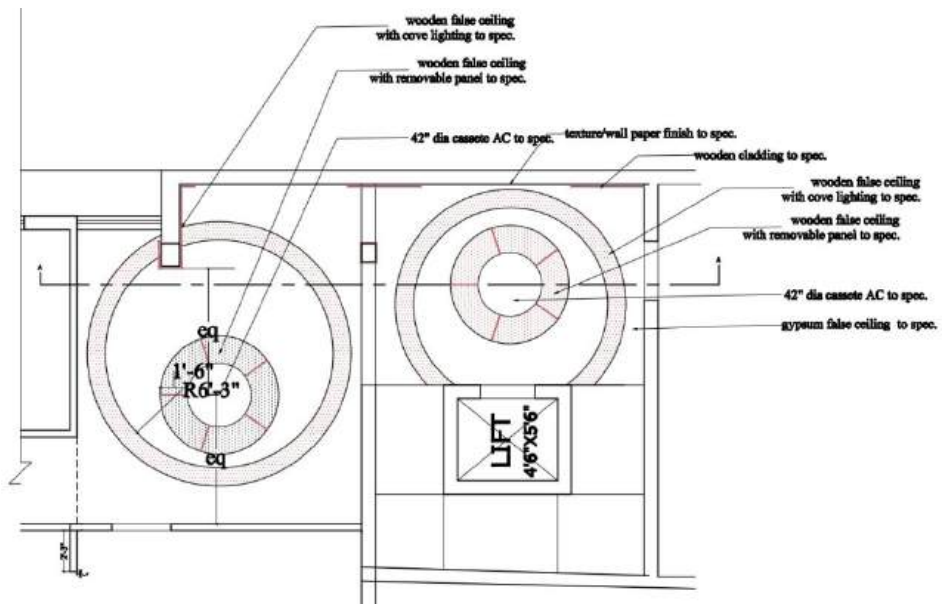
### KEY INFORMATION

Project Type  
Commercial Interiors.

Total rooms  
- 20 numbers

### Requirements

- False Ceiling
- Granite Laying
- UPVC Windows
- Bed with wooden and glass headboard
- Dresser and Storage in rooms.
- Texture Painting
- Shower Cubicle





**COMPLETED SITE IMAGES**





**COMPLETED SITE IMAGES**





# CONTACT

## Address

NO.122, Nainiammal St,  
Krishnapuram, Ambattur,  
Chennai - 600053

## Mobile

+91 90032 12777  
+91 9941584255

## Web & Mail

[www.archinterior.in](http://www.archinterior.in)  
[enquiry@archinterior.in](mailto:enquiry@archinterior.in)